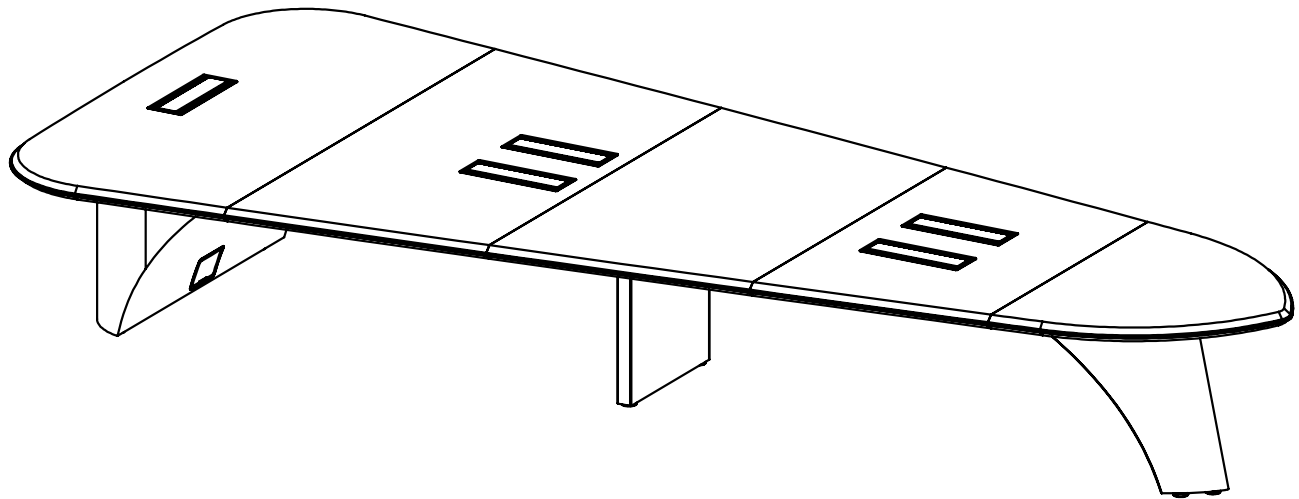




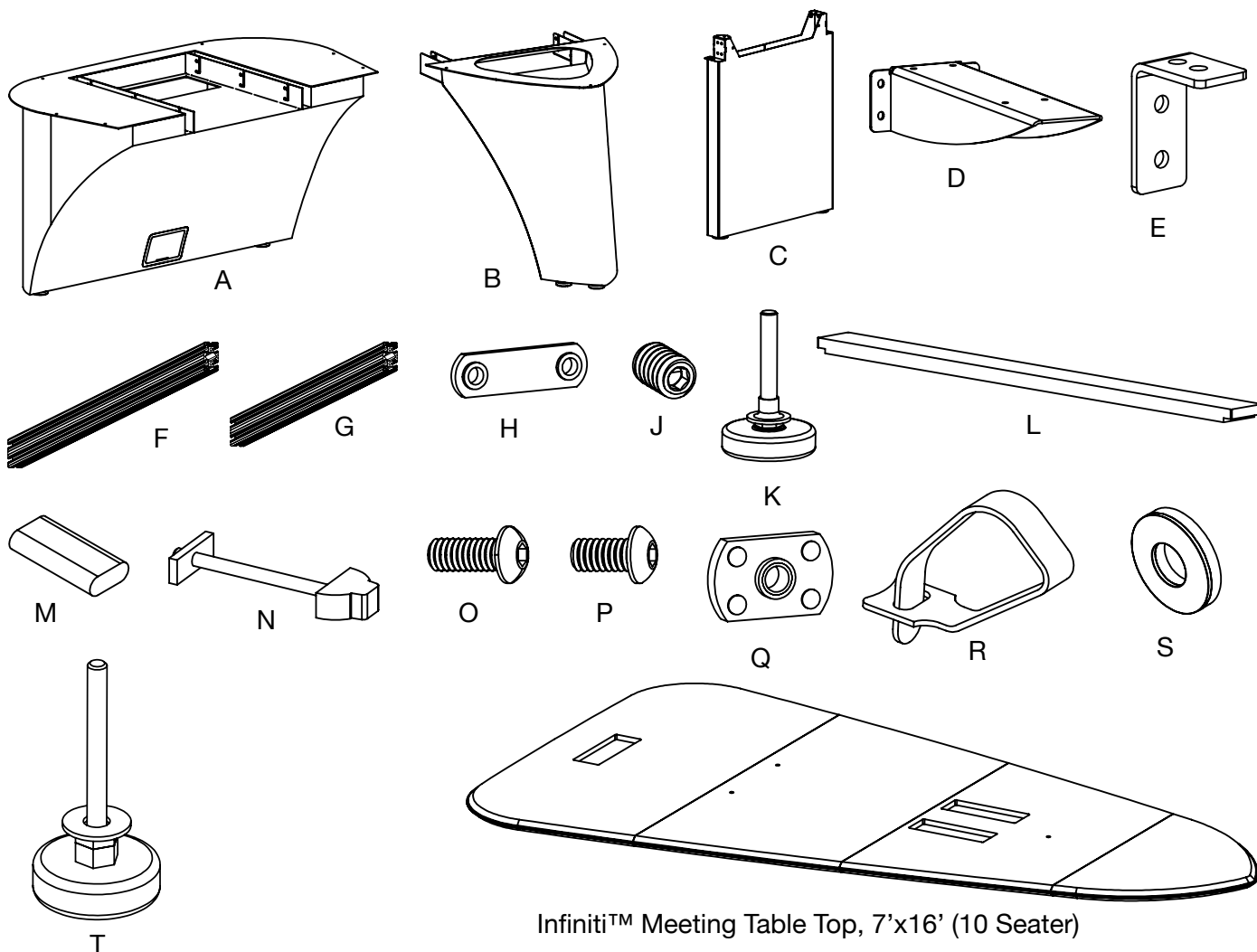
Infiniti™ Meeting Table (10 Seater)

IC/10M/D (7'W X 16'L)



PARTS

ID	QTY	PART NUMBER	DESCRIPTION
	(1)	TM2/T/716	Infiniti™ Meeting Table Top, 7'x16' (10 Seater)
A	(1)	306-505	Table Base, Rear Pedestal
B	(1)	306-510	Table Base, Front Pedestal
C	(1)	305-549	Rectangular Table Mid Leg
D	(4)	306-515	Table Support Bracket
E	(6)	P-303-335	Small L-Bracket
F	(2)	304-082/A	Stretcher
G	(2)	304-067/A	Short Stretcher
H	(12)	300-720	Double Flat Nut, 1/4-20
J	(12)	300-475	1/4-20 X 3/8 Socket Set Screw
K	(7)	300-365	Leveler
L	(10)	203-740/ICWM	Infinity Table Wire Manager
M	(22)	303-570	Table Domino
N	(14)	303-827	Table Connector
O	(31)	300-575	1/4-20 X 5/8" Button Head Screw
P	(56)	300-485	1/4-20 X 1/2" Button Head Socket Cap Screw
Q	(44)	300-560	1/4-20 Flat Nut
R	(16)	400-125	Velcro One-Wrap Strap 1/2" X 8" Long
S	(9)	300-515	1/4-20 X 5/8" OD Neoprene Washer
T	(2)	300-320	1/4" Leveler



1. Setup Stretchers

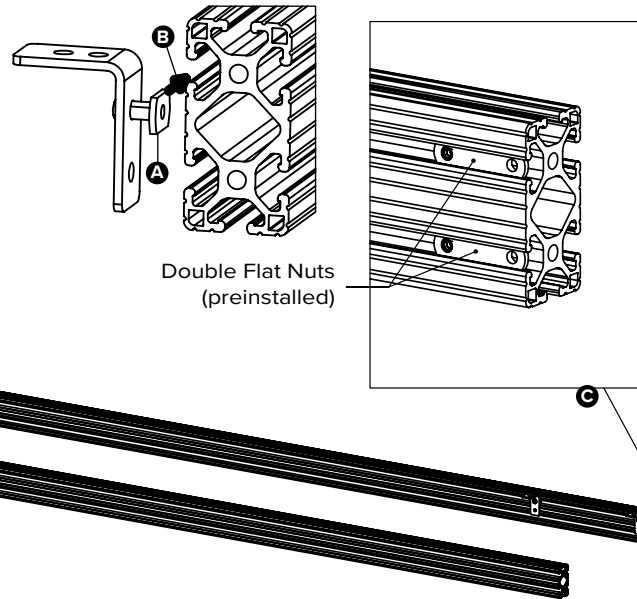
A. Assemble Small Flat Nut and a 1/4-20 x 1/2" Button Head Screw into the longer leg of a Small L-Bracket. Do not tighten.

B. Slide the Small Flat Nut into the Upper T-Slot.

C. Orient the 2 shorter stretchers as shown. Slide the Small Flat Nut into the upper T-Slot.

D. Repeat on opposite Stretcher, mirrored.

Double Flat Nuts
(preinstalled) at front,
facing down)



NOTE: This Assembly Requires Two People

2. Attach Stretchers to Front Pedestal

A. Place the Front and Rear Pedestals roughly 10' apart on a level floor then prop up the Front Pedestal.

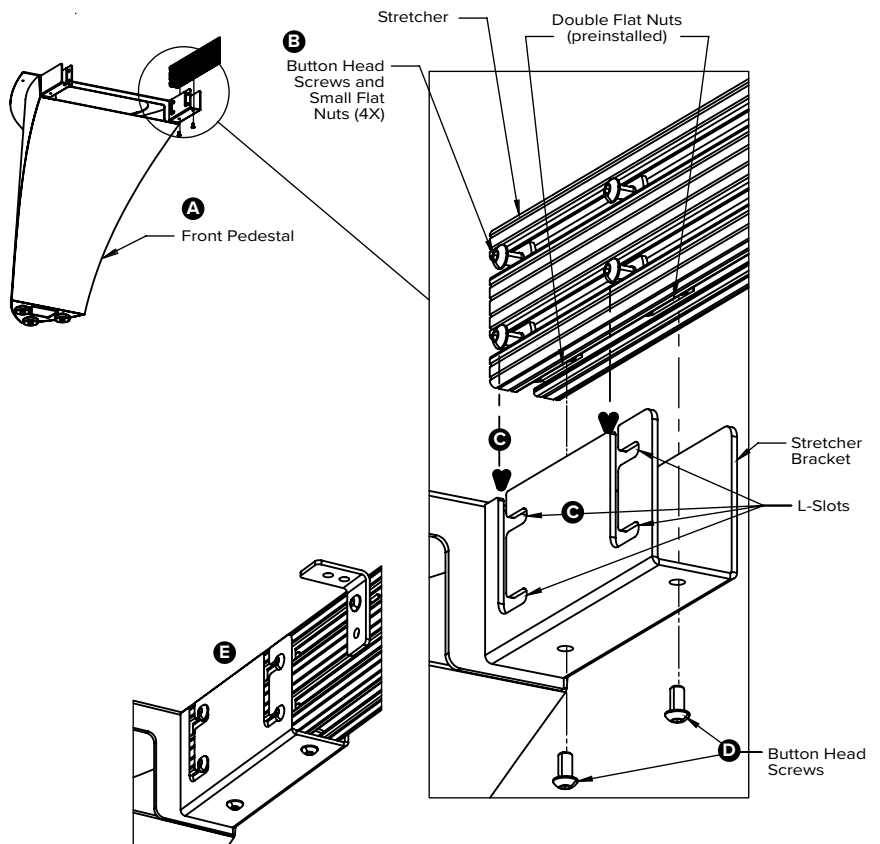
B. Insert four sets of loosely attached 1/4-20 X 1/2" Button Head Screws and Small Flat Nuts into the two t-slots in the Stretcher as shown.

C. Lower the Stretcher into the Stretcher Bracket with the four screws resting at the bottom of the two L-Slots.

D. Attach the Stretcher to the Stretcher Bracket using two 1/4-20 X 1/2" Button Head Screws.

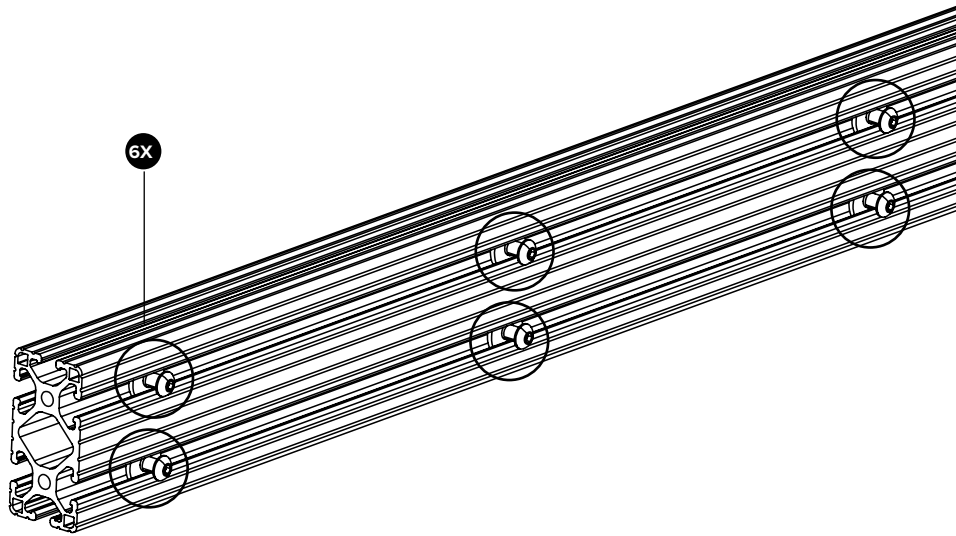
E. Slide the four sets away from the Pedestal into the L-Slots and tighten.

F. Repeat this process on the opposite side, mirrored.



3. Attach Stretchers to Rear Pedestal

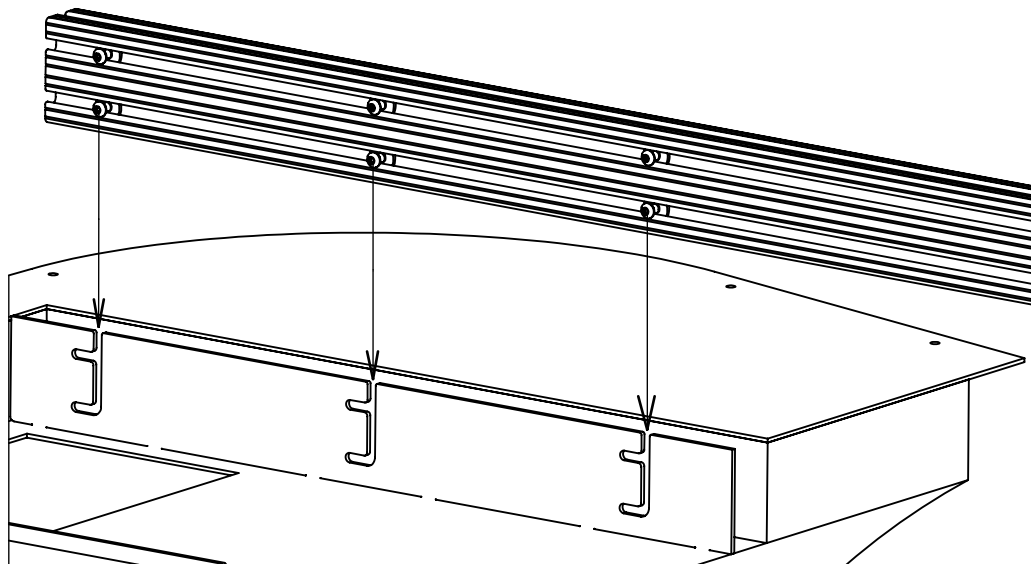
A. At the opposite side of the Stretchers, loosely install six 1/4-20 x 1/2" Button Head Screws and Small Flat Nuts in the upper and lower T-Slots as shown. Do not tighten.



B. Lining up the 1/4-20 x 1/2" Button Head Screws with the L-Slots in the Rear Pedestal, Lower the Stretcher into the Rear Pedestal Stretcher Pocket.

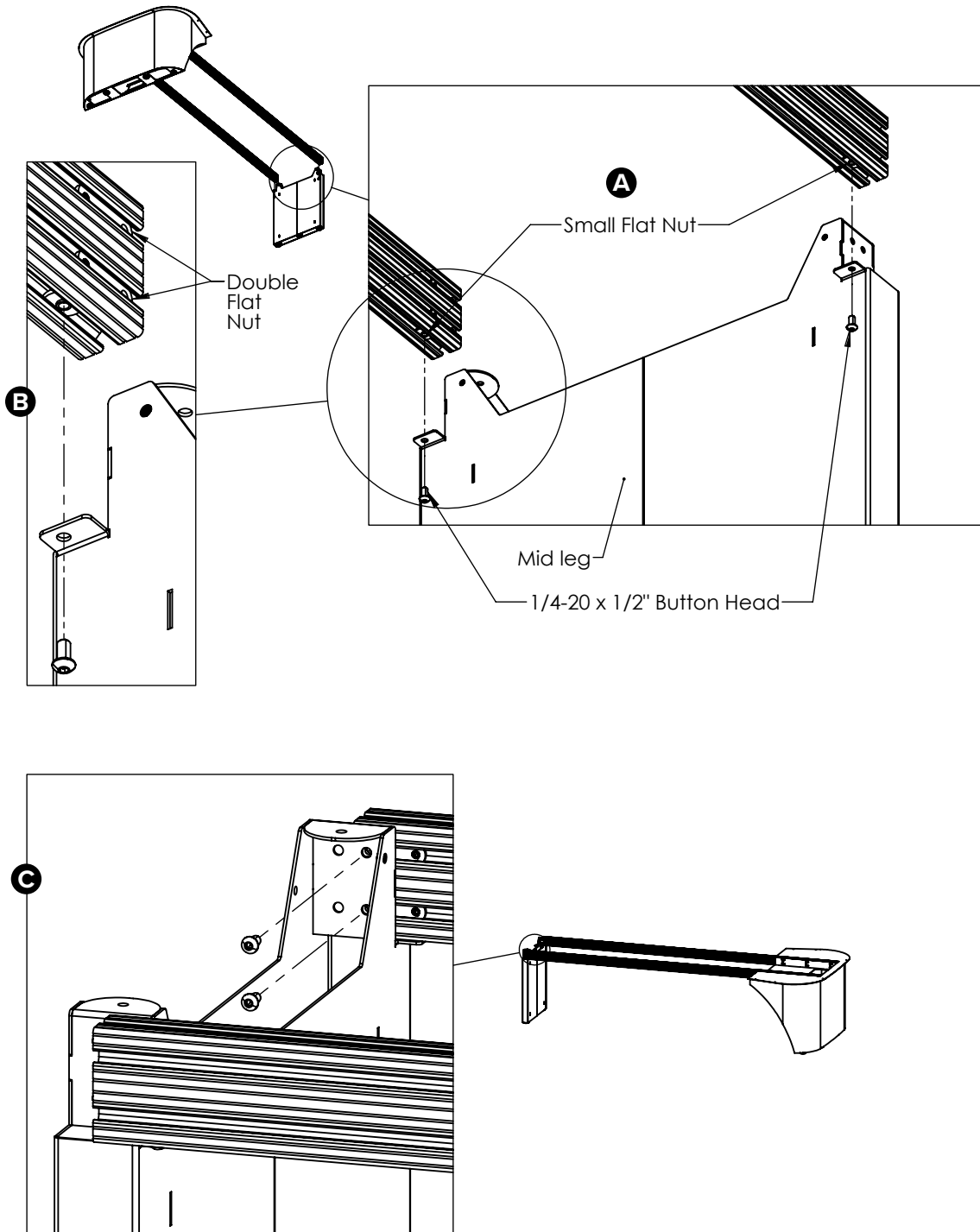
C. Slide the six bolts into the "L" slots toward the rear of the pedestal. Snug, but do not tighten the 2 rear screws. Leave the remaining screws loose.

D. Repeat on opposite side.



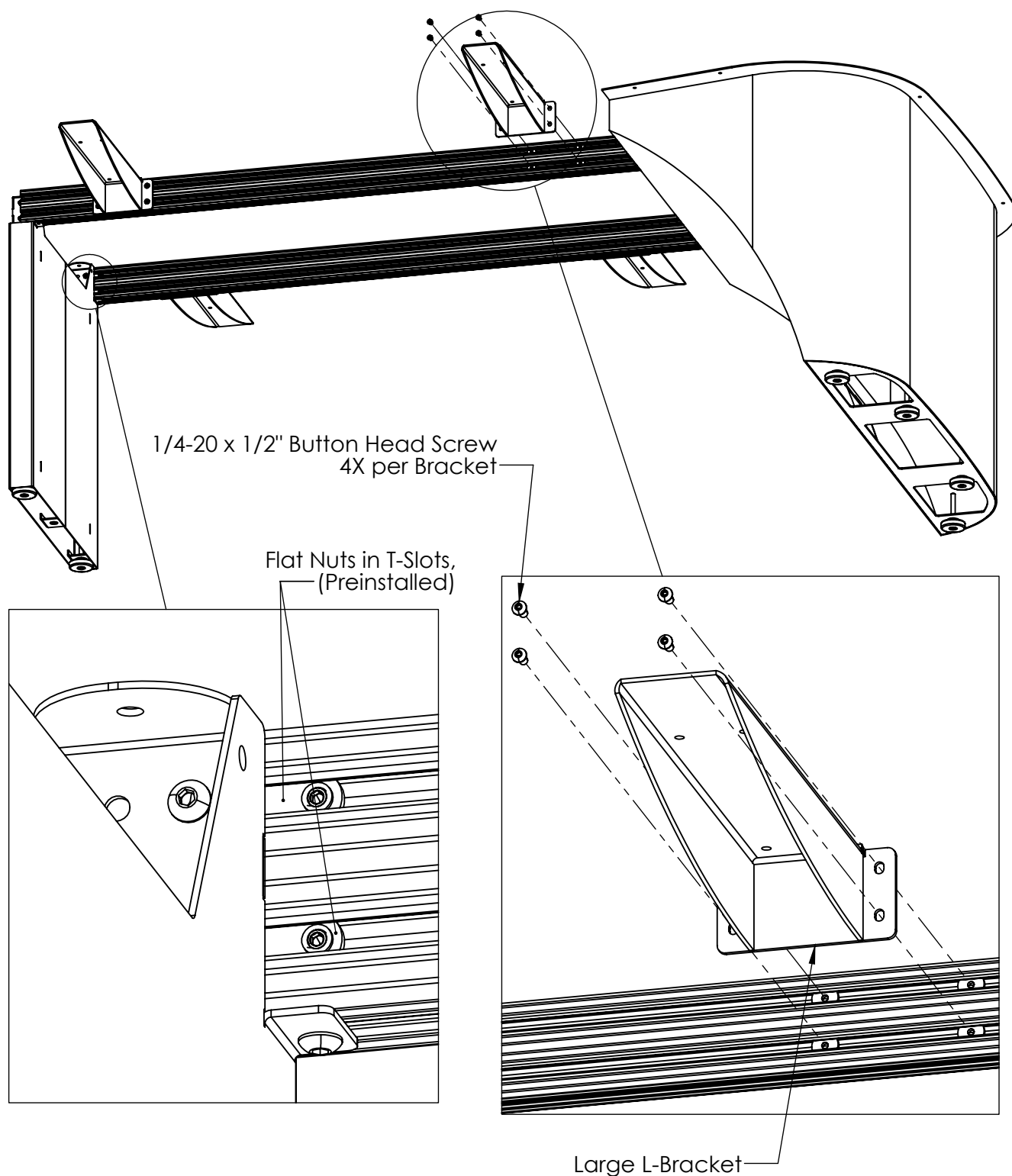
4. Attach Rear Stretchers to Mid Leg

- A. Insert a Small Flat Nut into the bottom of each Stretcher slot.
- B. Connect 1/4-20 x 1/2" Button Heads through the Mid Leg tabs and into the Small Flat Nuts. Do not tighten.
- C. Screw two (per side) 1/4-20 x 1/2" Button Head Screws through the Mid Leg Brackets and into the Double-Flat Nuts.



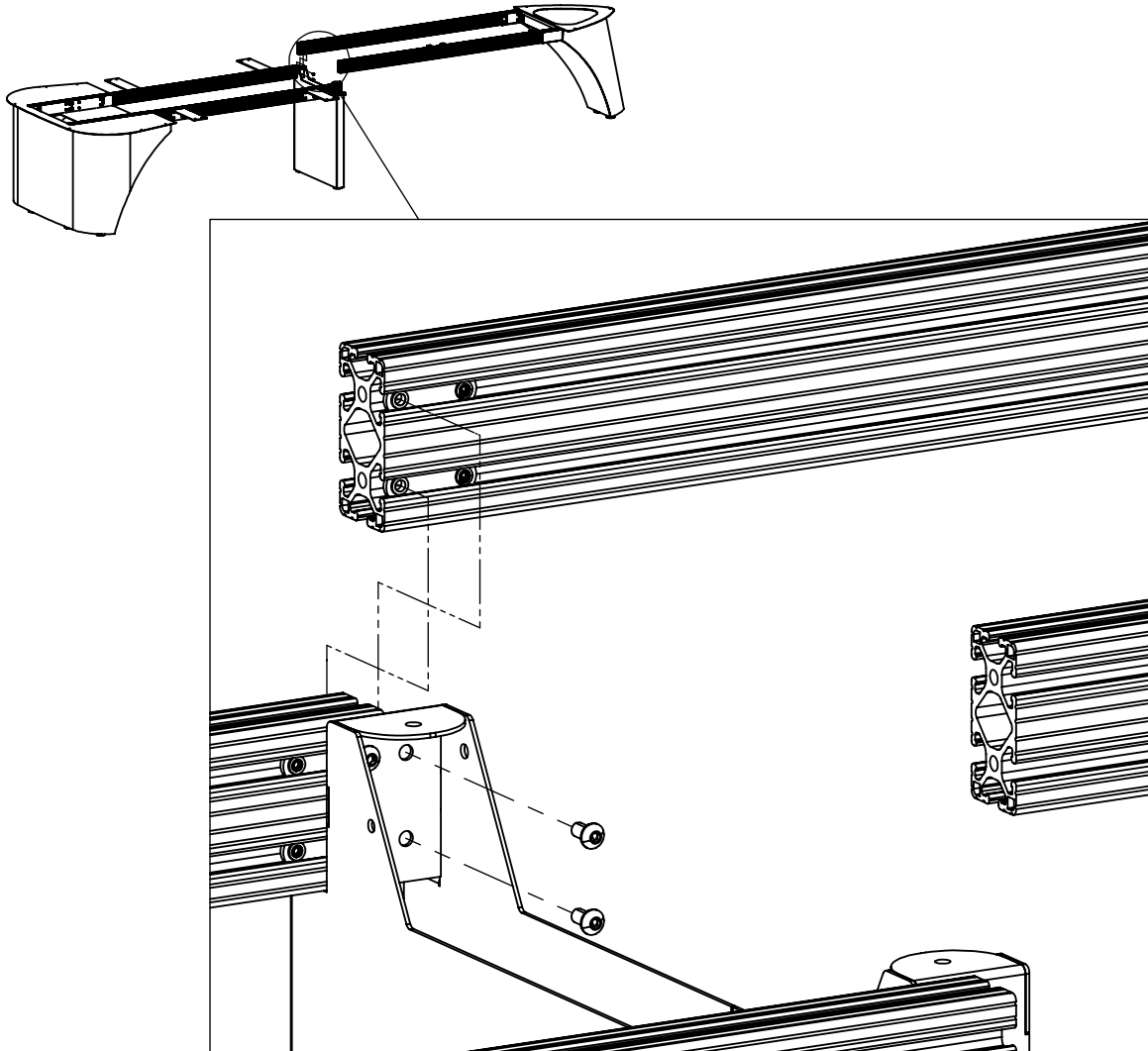
5. Attach L-Brackets

Install two Large L-Brackets using four 1/4-20 x 1/2" Button Head Screws and four Small Flat Nuts per bracket. Do not tighten. Location is not critical at this stage. Large L-Bracket locations will need to be adjusted in following steps. Repeat on opposite side, mirrored.



6. Attach Front Stretchers to Mid Leg

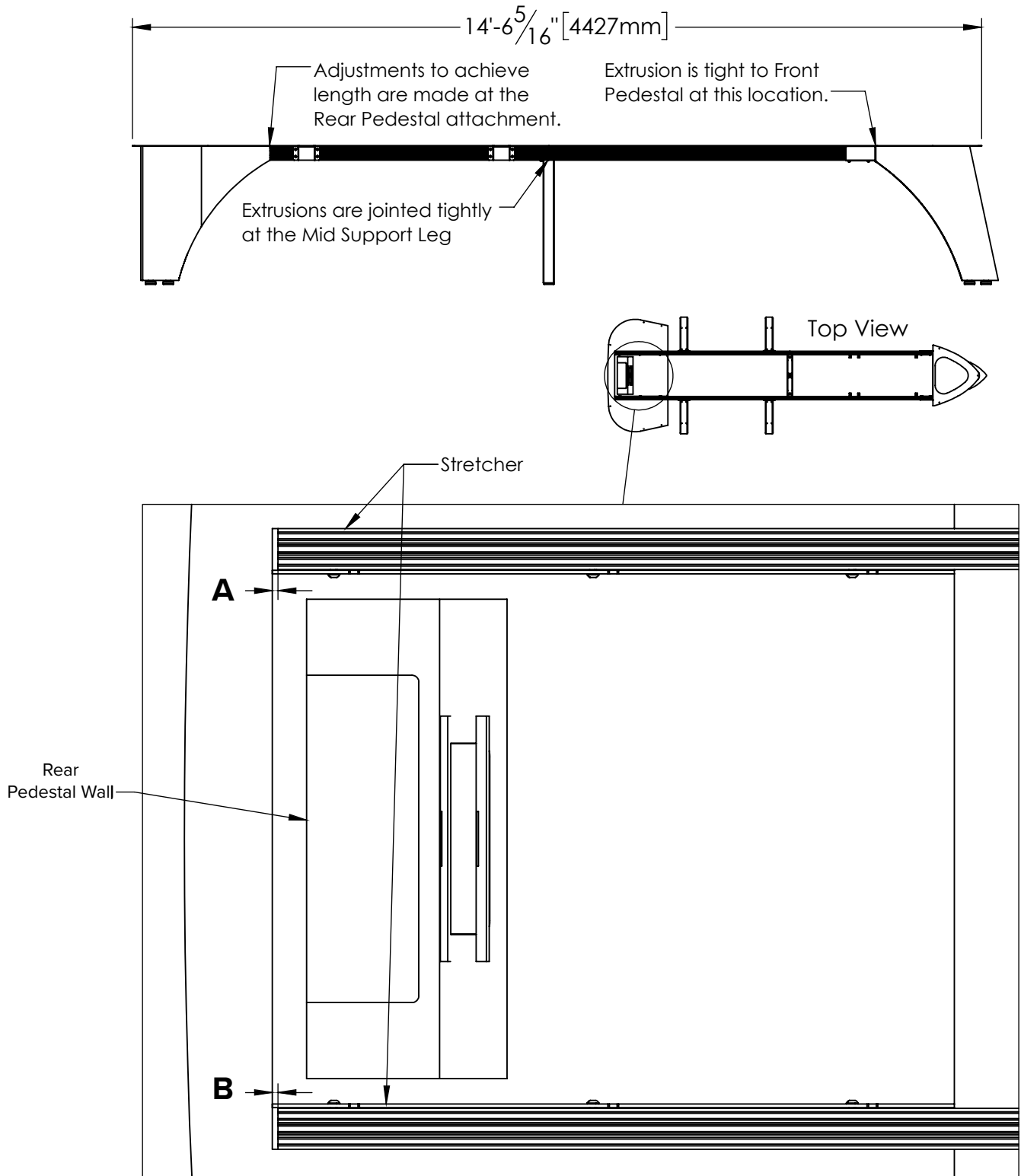
Screw two (per side) 1/4-20 x 1/2" Button Head Screws through the Mid Leg Brackets and into the preinstalled Double Flat Nuts.



7. Adjust and Tighten Pedestal

Set the table pedestal to it's maximum length.

Ensure gaps **A** and **B** are equal.



8. Level Pedestal Assembly

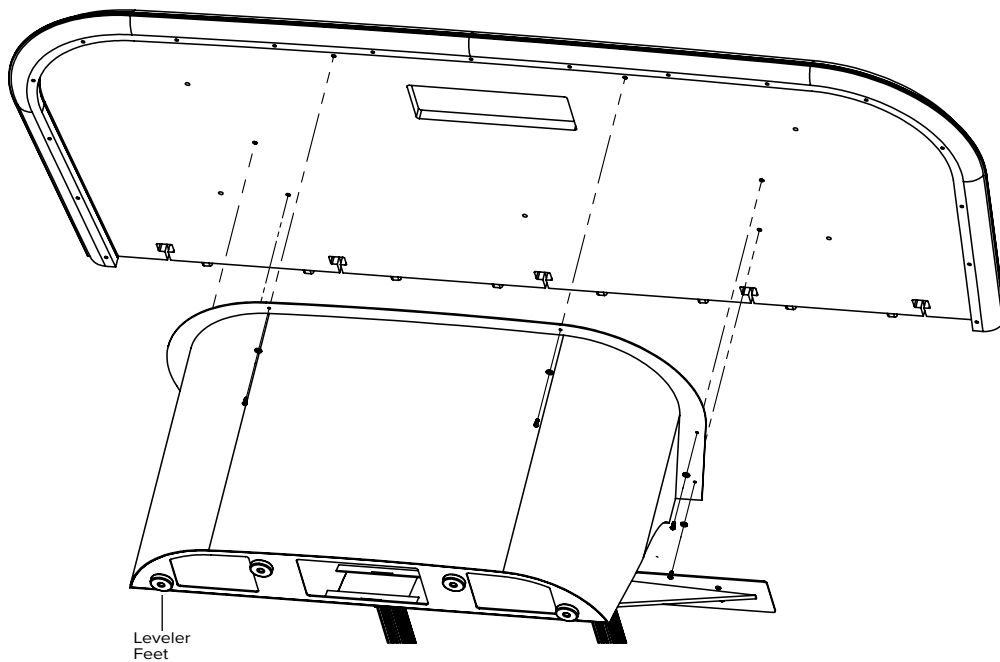
Check level of the assembly in both the length and width of the pedestal.

Adjust using the leveler feet installed under the pedestal assemblies with wrench provided.

9. Attach Top Section to Pedestals

Attach the rear section of the table top using six 1/4-20 x 5/8" Button Head Screws and six 1/4" bonded washers

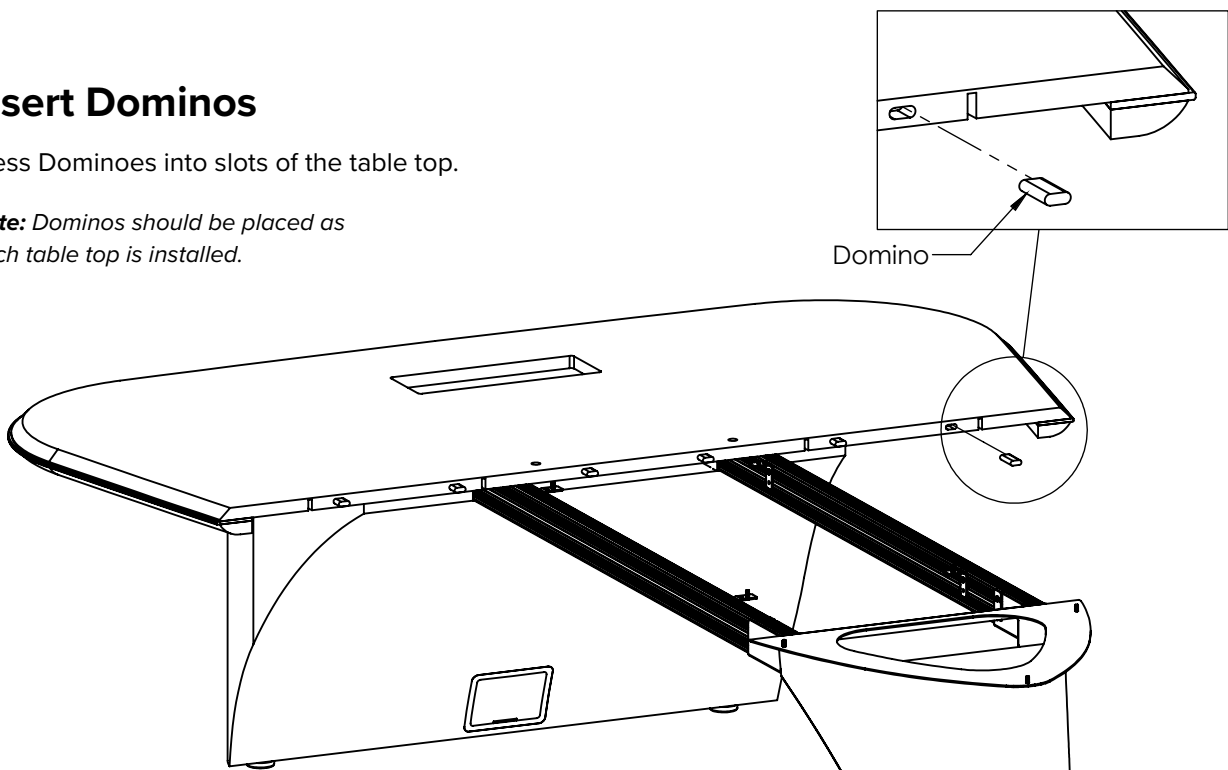
Do not tighten the screws.



10. Insert Dominos

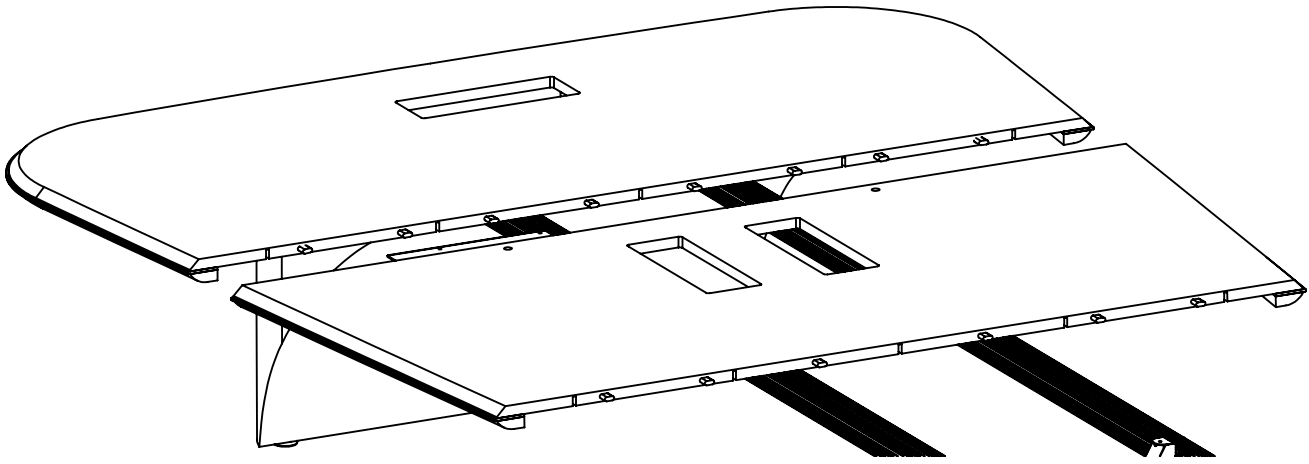
Press Dominos into slots of the table top.

Note: Dominos should be placed as each table top is installed.



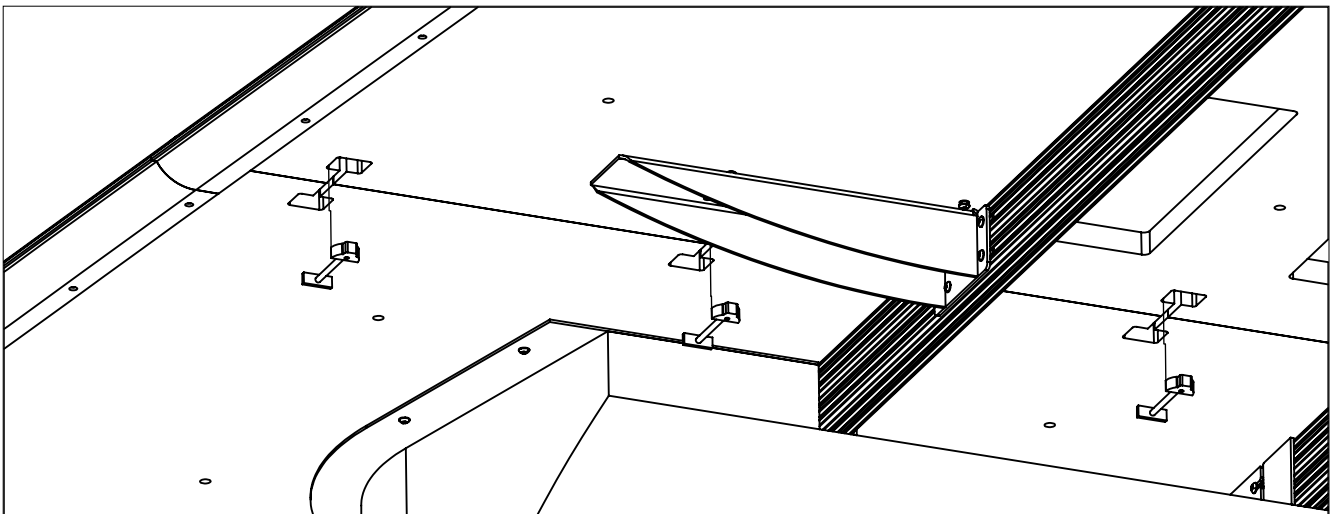
11. Attaching Top Segments

Attach the next table top section and slide to installed top while aligning dominos.

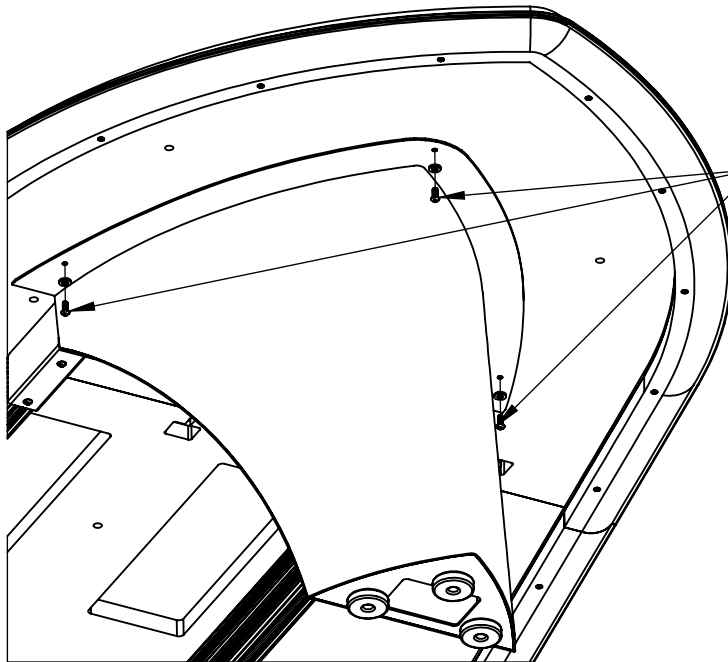


12. Fastening Top Joints

- A.** Install joint connectors into the pockets on the underside of the table top.
- B.** Tighten joint connectors from the middle outward, making sure the seams of both tops are flush.
- C.** Starting at the large end of the table, install each segment until the entire top has been assembled and Joint Connectors are tightened at all joints.



13. Fasten Pedestals

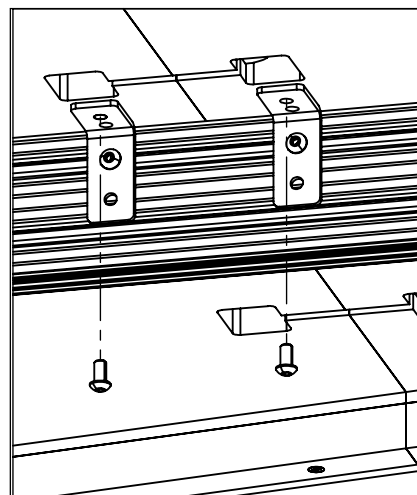
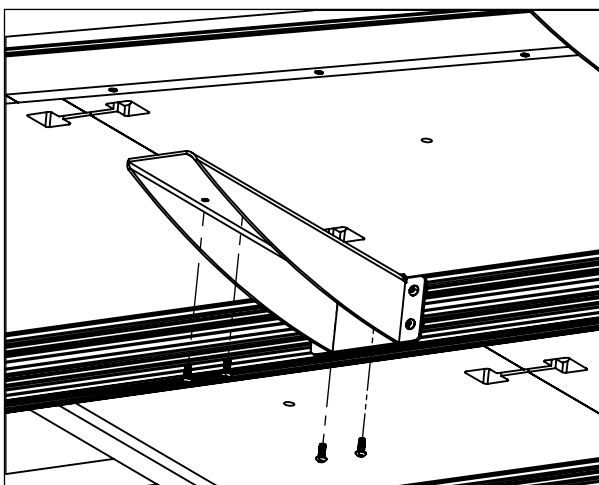


A. Install and tighten three 1/4-20 x 5/8" Button Head Screws with three 1/4" Neoprene Bonded Washers

B. Tighten screws in Rear Pedestal installed in Step 9.

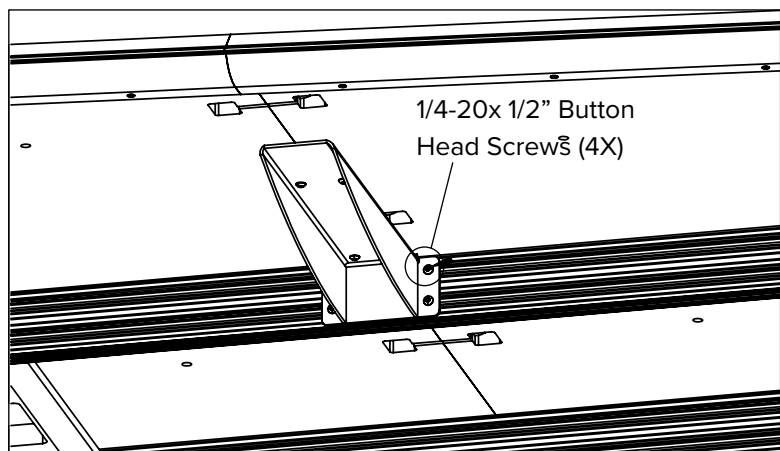
14. Secure Brackets to Top

Tighten the (one per bracket) 1/4-20 x 5/8" button head screws to attach the brackets to the two table sections. Repeat this process for the small L-Brackets (one screw per bracket).



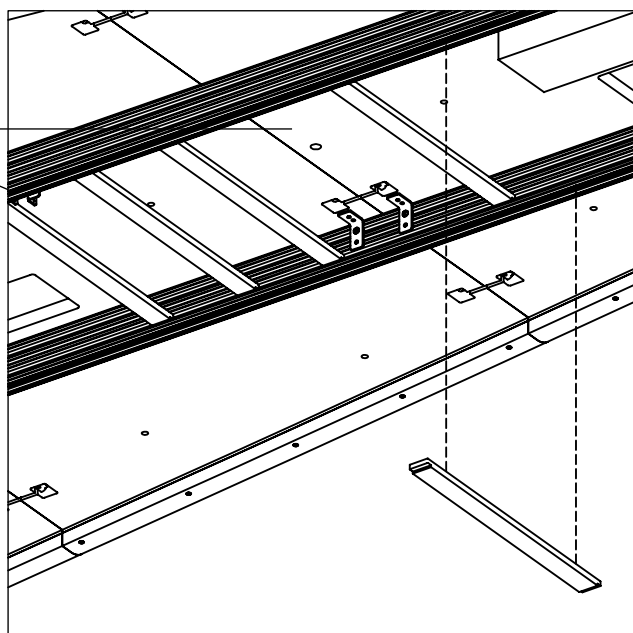
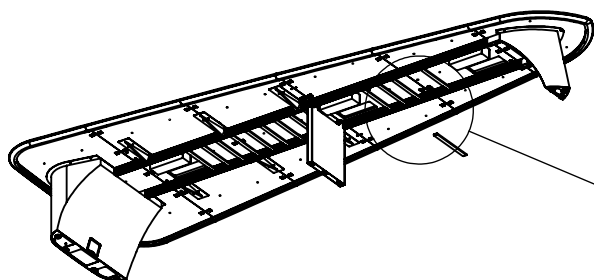
15. Secure Brackets to Frame

- A. Tighten the 1/4-20 x 1/2" button head screws to the stretchers.
- B. Using the Brackets, and tightening of them, adjust the table top for flatness.



16. Install Wire Management

Install Wire Management Slats in the Stretcher's lower T-Slot spacing them evenly to complete the assembly.



Please refer to the instructions for Cubbies and/or microphones for installation of selected accessories



LIMITED WARRANTY FOR COMMERCIAL VIDEO DISPLAY STANDS AND MOUNTS

Salamander is proud to stand behind our products with industry-leading warranties. Should you ever encounter any problem with your Salamander product, let us know. We are here to make it right. 1.800.535.5659 - 860.761.9500

Full warranty including limitations and warranty claim information may be found at www.salamanderdesigns.com/commercial/warranty