
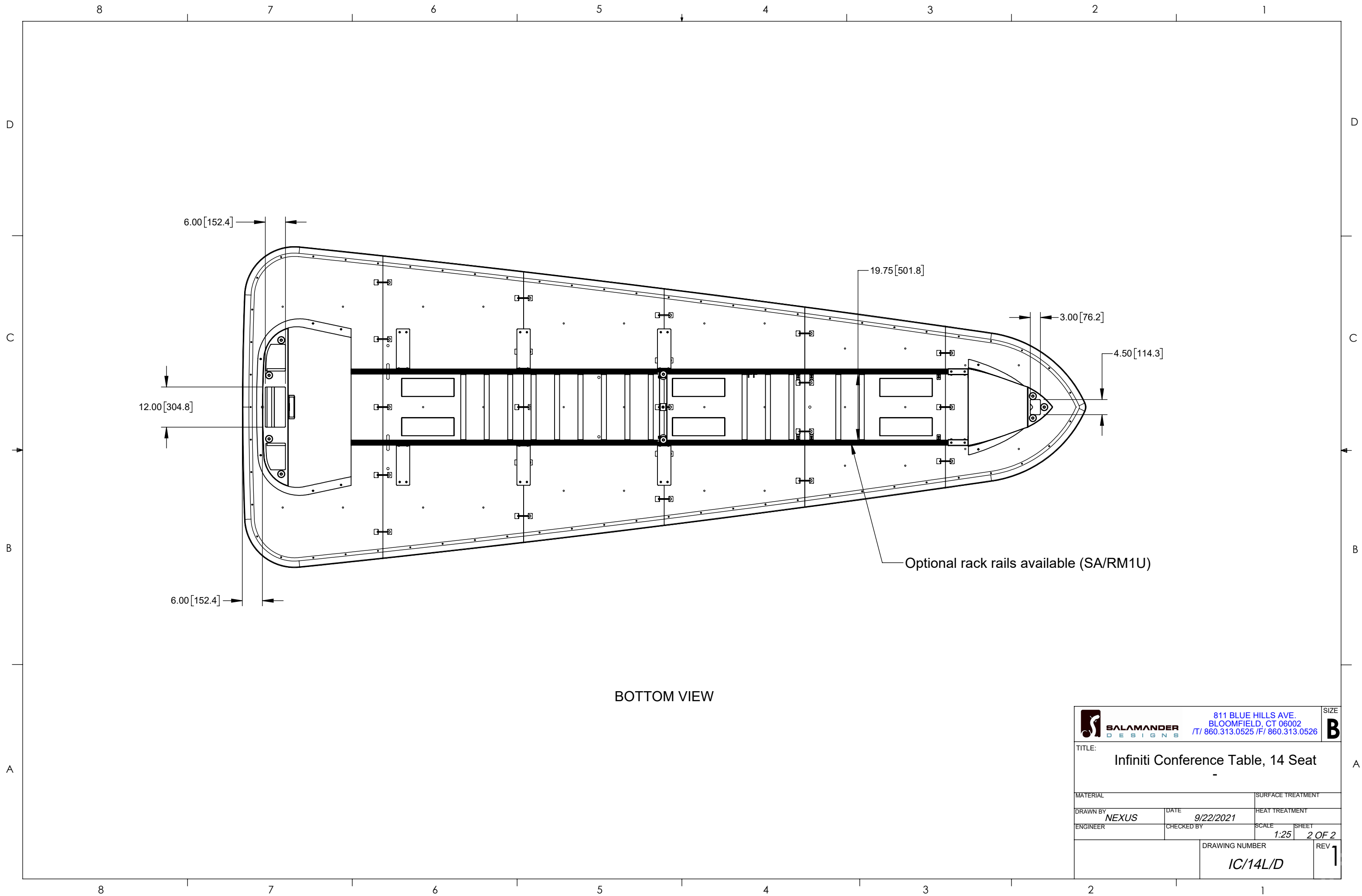



PROPRIETARY INFORMATION: THIS MATERIAL AND THE CONTENTS THEREOF ARE CONSIDERED THE PROPERTY OF SALAMANDER DESIGNS, AND THE DISCLOSURE TO UNAUTHORIZED INDIVIDUALS OR DISSEMINATION, PUBLICATION, OR COPYING THEREOF IS PROHIBITED WITHOUT PRIOR WRITTEN CONSENT BY SALAMANDER DESIGNS OF BLOOMFIELD, CONNECTICUT.

		811 BLUE HILLS AVE. BLOOMFIELD, CT 06002 T/ 860.313.0525 / F/ 860.313.0526		SIZE B
TITLE: Infiniti Conference Table, 14 Seat				
MATERIAL		SURFACE TREATMENT		
DRAWN BY NEXUS	DATE 9/22/2021	HEAT TREATMENT		
ENGINEER	CHECKED BY	SCALE	SHEET	
		1:25	1 OF 2	
DRAWING NUMBER			REV	
IC/14L/D			1	



BOTTOM VIEW

 SALAMANDER DESIGNS		811 BLUE HILLS AVE. BLOOMFIELD, CT 06002 T/ 860.313.0525 / F/ 860.313.0526		SIZE B
TITLE: Infiniti Conference Table, 14 Seat				
MATERIAL		SURFACE TREATMENT		
DRAWN BY <i>NEXUS</i>	DATE 9/22/2021	HEAT TREATMENT		
ENGINEER	CHECKED BY	SCALE	SHEET	
		1:25	2 OF 2	
DRAWING NUMBER			REV	
IC/14L/D			1	