
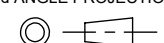
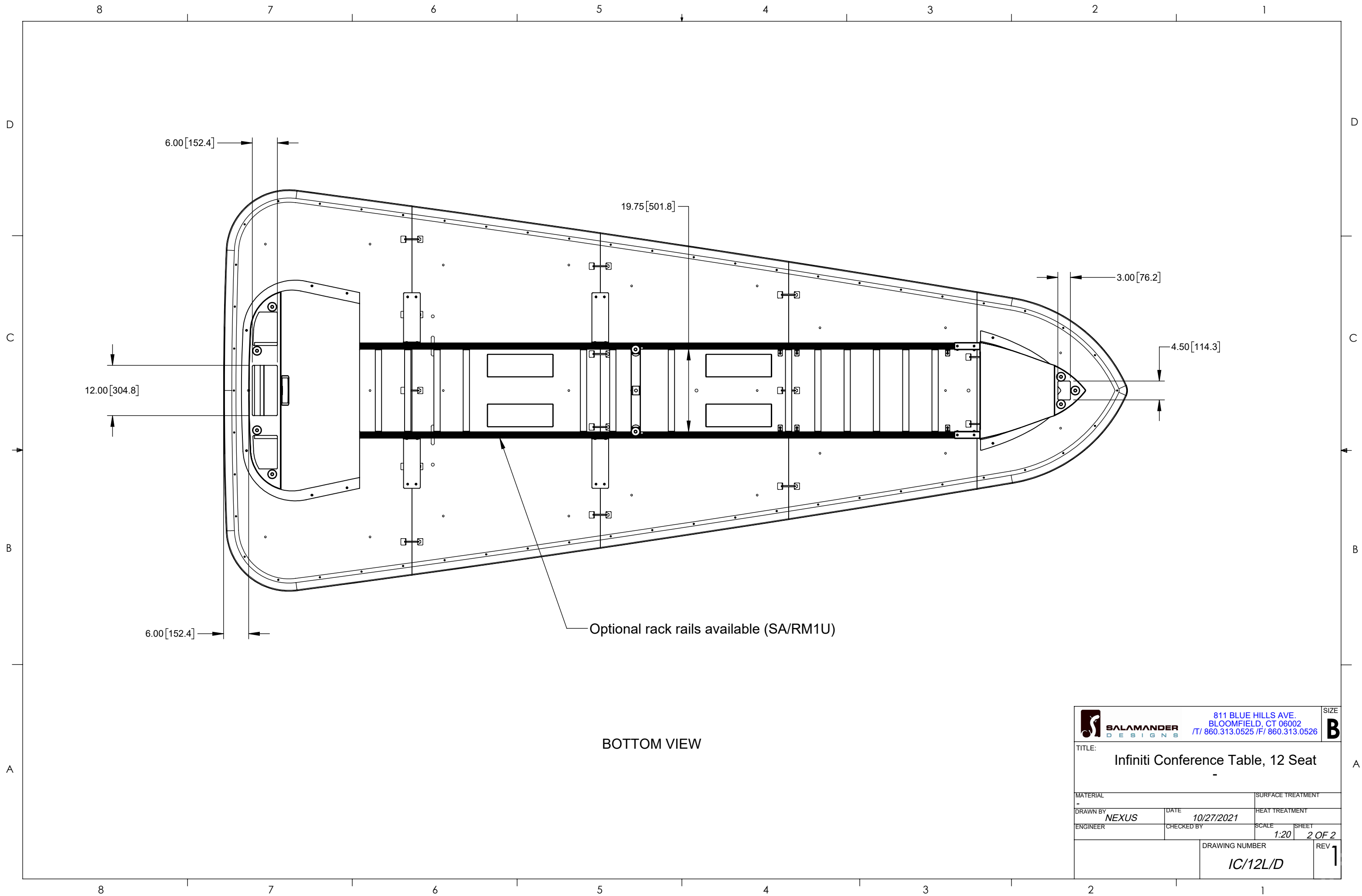



		<b>UNLESS OTHERWISE SPECIFIED:</b>		 811 BLUE HILLS AVE. BLOOMFIELD, CT 06002 T/ 860.313.0525 / F/ 860.313.0526		SIZE <b>B</b>
		- ALL THREADS TO BE CLASS 2 - COUNTERSINK ALL TAPPED HOLES - DEBURR HOLES AND BREAK SHARP EDGES - STAMP, ETCH, OR MARK DRAWING NUMBER AND REVISION LETTER ON A NON-CRITICAL SURFACE. - SURFACE FINISH TO BE 63 RMS		TITLE: <b>Infiniti Conference Table, 12 Seat</b>		
		- TOLERANCES: X ±.1 .XX ±.03 .XXX ±.015 .XXXX ±.0005 X* ±1° X* ±.5°		MATERIAL: -		
		CAD Solidworks		DRAWN BY: <b>NEXUS</b>		
		3rd ANGLE PROJECTION		DATE: <b>10/27/2021</b>		
QTY		NEXT ASSEMBLY		CHECKED BY		
APPLICATION				SCALE: <b>1:32</b>		SHEET: <b>1 OF 2</b>
PROPRIETARY INFORMATION: THIS MATERIAL AND THE CONTENTS THEREOF ARE CONSIDERED THE PROPERTY OF SALAMANDER DESIGNS, AND THE DISCLOSURE TO UNAUTHORIZED INDIVIDUALS OR DISSEMINATION, PUBLICATION, OR COPYING THEREOF IS PROHIBITED WITHOUT PRIOR WRITTEN CONSENT BY SALAMANDER DESIGNS OF BLOOMFIELD, CONNECTICUT.				DRAWING NUMBER: <b>IC/12L/D</b>		REV: <b>1</b>



BOTTOM VIEW

		811 BLUE HILLS AVE. BLOOMFIELD, CT 06002 T/ 860.313.0525 / F/ 860.313.0526		SIZE <b>B</b>
TITLE: <b>Infiniti Conference Table, 12 Seat</b>				
MATERIAL		SURFACE TREATMENT		
-				
DRAWN BY	DATE	HEAT TREATMENT		
NEXUS	10/27/2021			
ENGINEER	CHECKED BY	SCALE	SHEET	
		1:20	2 OF 2	
DRAWING NUMBER			REV	
IC/12L/D			1	