



SALAMANDER
DESIGNS

Furniture Guide

neat.



Adaptable | Optimized | Collaborative



Furniture solutions to suit every Neat Board.

Flex Spaces	4
Conference (6-10 People)	6
Conference (11-20 People)	7
Huddle Rooms (1-3 People)	8
Huddle Rooms (2-5 People)	9
Hybrid Classrooms	10
Home Office	12
Unifi™ Meeting Tables	13
Cabinet Systems	15

Today's workplace. Today's most adaptable furniture solutions.

Salamander Designs delivers innovative, complete AV Furniture design, manufacturing and superior customer service that will save you time and money when outfitting conference rooms, flex rooms, offices, huddle rooms, meeting rooms, training and education rooms and boutique spaces.

Helping you design beautiful, functional furniture systems that adapt to your technology is just part of what we do. We provide comprehensive solutions that help you connect people and maximize your technology for video and virtual conferencing, unified communications and Neat – whether you're working from home or across the globe.





Unified communication
systems that connect
people and ideas.

Flex Spaces.

Today's workforce is on-the-go and may be in-person, socially spaced or meeting virtually. The need to connect and collaborate easily at a moment's notice is vital.



FPS Electric Lift Mobile Stand with Speaker Mount



Specifications



Maximum occupancy
4 people



Recommended Screen Size
65"

With Salamander, now you can deploy the latest technology and seamless setup to every conference, meeting and space quickly – whether between managers, mid-sized team huddles or full-blown meetings with thousands around the globe.

Flex Spaces.



Salamander 337 Standard Profile Cabinet on wheels with Single Display Mount and Speaker Mount

Specifications



Maximum occupancy
6 people



Recommended Screen Size
65"



Conference Rooms.

6-10 People





Today's teams are video conferencing with Neat on an hourly basis. Small to medium conference rooms include displays, speakers, mics and more. Salamander furniture brings it all together, allowing you to collaborate easily and instantly.



367 Low Profile Cabinet with Dual Display Mount and Speaker Mounts. 4' x 12' Unifi™ Meeting Table, Trapezoid Shape



Specifications

-  **Occupancy**
6-10 people
-  **Room size**
12' x 15' - 15' x 20'
-  **Recommended Screen Size**
75" - 98" or Dual 65"-75"
-  **Table size**
5' x 6' - 5' x 12'

This furniture optimizes every display and camera position, sound systems and houses all components, to maximize technology and engagement. Tables come in many sizes, and the low-profile cabinet is ideal for rooms where space is at a premium.

Conference Rooms.

11-20 People



367 Low Profile Cabinet with Dual Display Mount and Speaker Mounts. paired with Meeting Table, Rectangular Shape

Specifications



Occupancy
11-20 people



Room size
15' x 20' - 20' x 25'



Recommended Screen Size
75" - 98" or Dual 65" - 80"



Table size
5' x 10' - 5' x 20'



Huddle Rooms.

1-3 People

The need for speed and to huddle up to communicate in smaller spaces has taken over. Unifi Huddle™ Stations enhance quick video conference in any smaller or open room with a turnkey table, cabinet for monitor and camera setup and seating or standing configuration.



Unifi™ Huddle Lite with Single Display Mount and Speaker Mount



Specifications



Maximum occupancy
3 people



Minimum room size
Width: 3.6m / Length: 3.55m / Area: 12.78m²



Recommended Screen Size
48" - 55"



Table size
4' x 4'

Huddle Rooms.

2-5 People



4' x 5' Unifi™ Huddle with Single Display Mount and Speaker Mount

Specifications



Maximum occupancy
5 people



Minimum room size
10' x 13' - 12' x 15'



Recommended Screen Size
48" - 55"



Table size
4' x 4' - 4' x 5'



Hybrid Classroom.

15-25 People




Education changed overnight and now includes Neat conferencing, distance learning and hybrid activities. Our flexible furniture systems can connect people and ideas in new ways.



367 Low Profile Cabinet with Dual Display Mount and Speaker Brackets paired with FPS Electric Lift, Mobile Stand



Specifications

-  **Maximum occupancy**
25 people
-  **Room size**
20' x 20' - 20' x 25'
-  **Recommended Screen Size**
Dual 65" - 98"

Mobile Carts and Stands hold oversized displays so instructors can adjust height, conference in seconds and roll them from room to room. All electronics and wiring are enclosed for convenience. With tech shelves, remotes and accessories, learning is made mobile and dynamic while maintaining a low-risk environment.

Hybrid Classroom.

15-20 People



FPS Electric Lift, Mobile Stand

Specifications



Maximum occupancy
20 people



Room size
15' x 20' - 20' x 20'



Recommended Screen Size
65" - 85"



neat.

Home Office.

1-2 People

Doing business now extends beyond office walls, and staying connected is crucial. Huddle@Home™ furniture brings technology and teams together wherever they are. These systems take our enterprise conference furniture and pack them into a sleek home office design with options in cabinet sizes, colors and materials to match. Establish a Neat-ready office in days without cutting walls. Include monitors, audio options, camera and mic setups to suit any room.



323 Standard Low Profile Cabinet with Single Display Mount and Speaker Bracket



Specifications



Maximum occupancy
2 people



Minimum room size
10' x 13'



Recommended Screen Size
48" - 65"

Unifi™ Meeting Tables.



Low Impact Installation
Easy to deploy, simple to move

- Built on aluminum chassis
- Lift off access panel on both sides of storage base allow simple equipment access
- Cable management from floor to pedestal with fully open interior and raceway up to table
- Equipment storage options include rack mount equipment with 3ru vertical racks and cooling systems
- Ample space to accommodate large cable retractors
- Vented pedestal provides convention cooling
- Top surface cable cubby and connections
- Under surface charging ports
- Pedestal located power ports
- Custom cut-in of any customer supplied device



Shapes & Sizes

Rectangular



4' x 16' 5' x 16'	4' x 14' 5' x 14'	4' x 12' 5' x 12'	4' x 10' 5' x 10'	4' x 8' 5' x 8'	4' x 6' 5' x 6'
14 - 16 Seats	12 - 14 Seats	10 - 12 Seats	8 - 10 Seats	6 - 8 Seats	4 - 6 Seats

Trapezoid*



5' x 16'	5' x 14'	5' x 12'	5' x 10'	5' x 8'	5' x 6'
13 Seats	11 Seats	9 Seats	7 Seats	5 Seats	3 Seats

Boat*



4' x 16' 5' x 16'	4' x 14' 5' x 14'	4' x 12' 5' x 12'	4' x 10' 5' x 10'	4' x 8' 5' x 8'
14 - 16 Seats	12 - 14 Seats	10 - 12 Seats	8 - 10 Seats	6 - 8 Seats

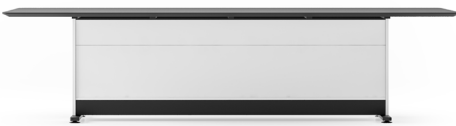
* Trapezoid – Tapered ends provide optimal sight lines for all participants.

* Boat – Curve on a boat shape offers better sight lines.

Unifi™ Meeting Tables

Storage Pedestal

A variety of laminate and real wood veneer finishes with black legs and toe-kick.



White, Laminate



Siena, Black Oak Wood



Siena, Gray Walnut Wood



Siena, Medium Walnut Wood



Siena, Wengé Oak Wood



Siena, American Cherry



Siena, Natural Oak Wood



*Custom HPL Laminate
Tops and Pedestals
Call or details.

Table Surfaces

Square, Plywood Edge

Matching, Knife Edge

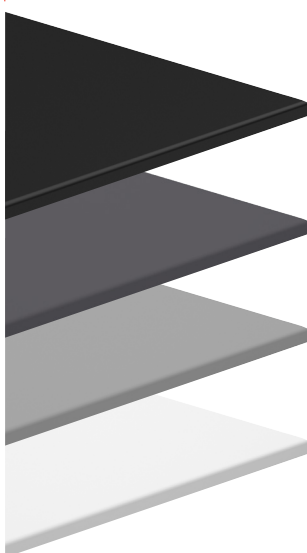
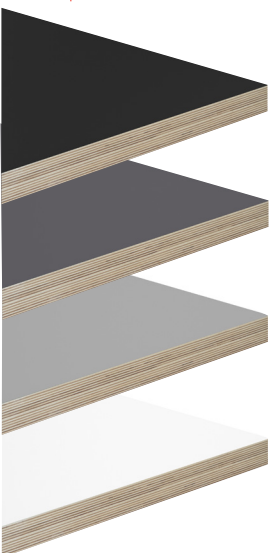


Table Edges

Wilsonart® Traceless™ Ultra Matte Laminates

Super durable table top surface, with a soft-to-the-touch super matte, unique fingerprint-resistant, technology that ensures smears, smudges and streaks are seldom seen.



Black Velvet
15505



Charcoal Velvet
15504



Silver Velvet
15503



Snow White Velvet
15501

Wilsonart® Satin High Pressure Laminates



Carbon Mesh
4880-38



Linen
D427-60



Fashion Gray
D381-60

Cabinet Systems.



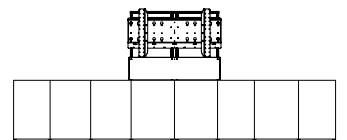
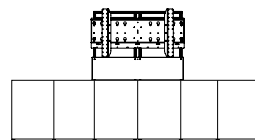
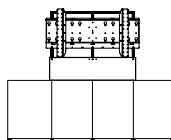
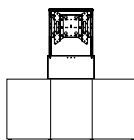
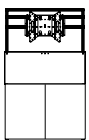
Low Impact Installation

Easy to deploy, simple to move

Salamander cabinet system house all electronics, including integrated support for AV and IT systems. Fully-integrated, Salamander cabinets are perfect for retrofit installations, allowing for quick and efficient installation without involving additional trades people to install electrical wiring or reinforce walls.



Single or Dual displays Mounts
with various center of screen heights.



Cabinet Styles

Select from the finest materials and finishes to suit our style and space.



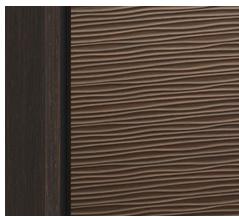
Flat Front Doors & Sides
Available in 16 finishes with
a white or black top.



Beveled Edge Top & Sides
Available in Natural Walnut
with white doors.



*All styles come
standard with
leveler feet.



BERLIN*
Wenge,
Wave-Texture Doors



CHICAGO*
Black Oak,
Grass-Textured Doors



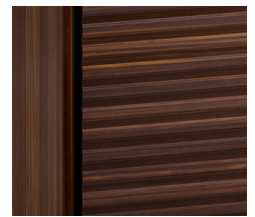
DENVER – OAK*
Natural Oak,
Bark-Textured Doors



DENVER – WALNUT*
Medium Walnut,
Bark-Textured Doors



SEATTLE*
Gray Oak,
Bark-Textured Doors



ZURICH*
Opium Brown,
Linear Texture Doors



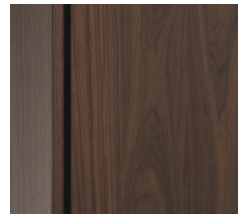
MILAN*
Dimensional, Diamond
Pattern, White



MIAMI*
Gloss Warm White



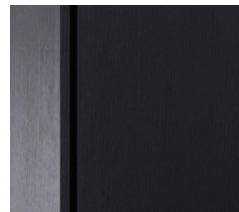
BARCELONA, WHITE
Natural Walnut, Warm
White Doors,
Beveled-Edge Top



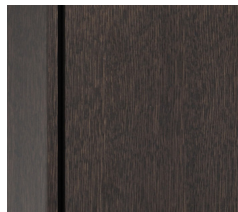
SIENNA*
Medium Walnut,
Flat-Front
Wood Doors



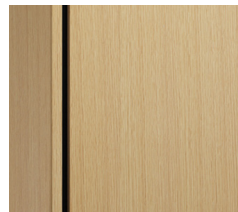
SIENNA*
Gray Walnut,
Flat-Front
Wood Doors



SIENNA*
Black Oak,
Flat-Front
Wood Doors



SIENNA*
Wenge Oak,
Flat-Front
Wood Doors



SIENNA*
Natural Oak,
Flat-Front
Wood Doors



CUSTOM HPL



Custom Finish Matching
Match your finishes
using our in-house
finishing department.



Fabricate Your Own
Custom Millwork
Specifications
Available

Neat Board Room Kits.

Neat Board is the complete Zoom Rooms package in a simple and elegant all-in-one device.

- 65-inch capacitive multi-touch LED screen
- Ultra HD 4K (3840 x 2160 screen resolution)
- Anti-glare and anti-fingerprint coating
- Camera LED
- System LED

Audio

- Speaker box for maximum tonal range with minimal distortion
- Opposing drivers for vibration cancellation
- Dedicated wide-angle ultrasonic tweeter
- 3 sensor mics
- 5 microphones angled in an end-fire array

Video

- 4x digital zoom
- Fixed lens, infinite focus
- F-value: 2.8
- 4056 x 3040 (12 MP) capture resolution
- 120 degrees horizontal field of view

Neat Pad

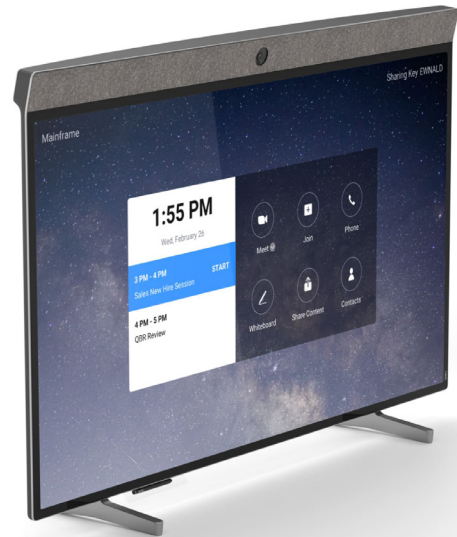
- 8-inch (diagonal) touch screen
- 1280 x 800 screen resolution
- Anti glare, anti smudge coating
- Ambient light sensor
- Sensors for temperature, humidity, CO2 and VOC
- Side LED Indicators
- Speakers for ultrasound
- 2 microphones (*)



Neat Pad as a Zoom Rooms controller or scheduling display



Neat Board – Floor stand with wheels



Neat Board – Table stand

Neat Bar

- Camera LED
- System LED
- Accelerometer
- Ambient light sensor
- Sensors for temperature, humidity, CO2 and VOC
- Table stand, wall mount and screen mount
- Dual screen support



Neat Bar with controller

Together, we can meet any room, size + technology need.

With Salamander, you can deliver solutions to meet most any room layout, size and need. Go small, medium, large – even go mobile. Our simple systems can equip a small foyer or digital messaging board up to a multi-level conference center – and everything in between. Scalable solutions allow you to be nimble, flexible and use just what you need when you need it.

**Low Impact Installation**

Save time & money with reduced construction

**Premium Crafted, Designer Styles**

Unlimited custom options and custom design solutions

**Quick Connect**

Support all technology and maximize user engagement

**Mobility**

Quickly and easily move between spaces as needed

**Rapid Deployment for display and furniture systems**

We help make the most of technology – and your team

**Upgradeable and Retro-fit Friendly**

Adaptable furniture supports ever-changing technologies and is easily refreshed in lieu of replacement

**ADA Compliant Solutions**

Incorporate every compliance & certification

SALAMANDER WORKING BEAUTIFULLY FOR YOU

Your next meeting can be your best meeting, with help from Salamander Designs and Neat. Together, we make workplace collaboration unbeatable.

www.salamandercommercial.com/neat | custom@salamanderdesigns.com