

SALAMANDER DESIGNS

ADVANCED WORKPLACE SOLUTIONS



SALAMANDER + SHARP ALIGNED FOR YOU

Salamander supports Sharp to bring together elegant collaboration display technology and premium AV furniture for mutual integrators and end customers. These turn-key systems feature innovative cabinets and mobile carts designed for collaboration displays to provide stunning aesthetics and ergonomically-correct display positioning for the best possible user experience.

Complete Deployment for a Better Experience

- Sleek, Cabinets and Mobile Carts specifically designed for all collaboration displays
- ADA compliant with UL-listed display mount
- Unique depths for greater space optimization
- Accessible, comfortable, ergonomic display positions for improved productivity and user experience
- Low impact installation - no wall reinforcement, simple toggle bolt installation for anti-tip
- Rapid Global Deployment with standardized, simplified AV solutions that save time and money
- Retrofit-friendly and easily upgradeable





Sharp
PN-L751H

SALAMANDER
FPS1/ELT/GG

“ At Sharp we recognize the value of aligning with like-minded companies to work together to provide the best possible user experience for our customers. By collaborating with Salamander Designs, we can assure that Sharp Integrators and customers achieve maximum productivity and the greatest benefit from their investment. ”

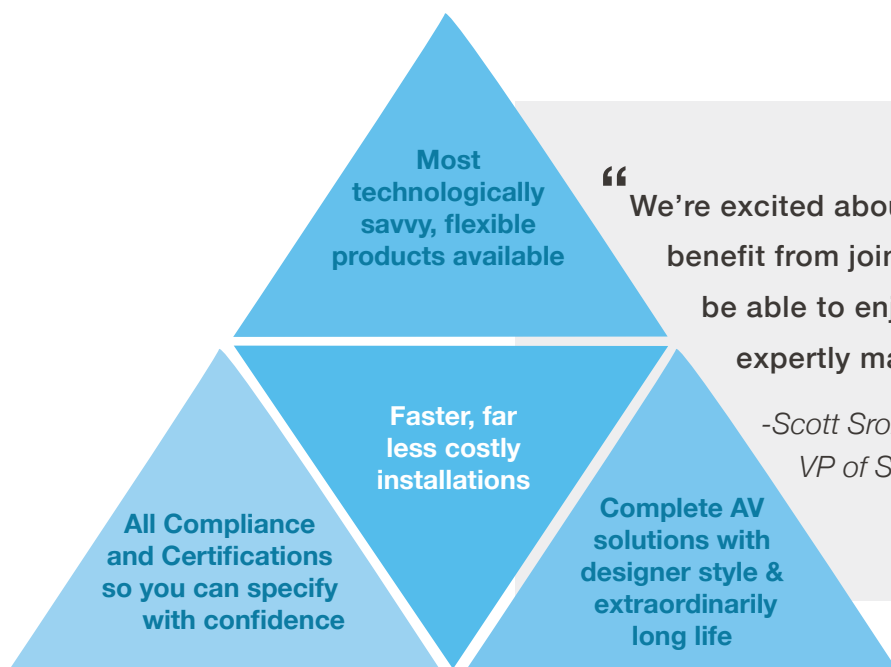
*-Gary Bailer, Director of Product Planning & Marketing,
Pro AV Products Sharp Imaging & Information Company of America*

SALAMANDER + SHARP WORKING FOR YOU

The Salamander and Sharp difference lies in the seamless intersection of premium furniture design with AV technology that makes your projects faster to specify, easier to install and more visually appealing than ever before. Considered the “go to” furniture brand by integrators the world over, Salamander has a 25-year history of delivering high-quality workplace furniture, seating and AV-support structures. When coupled with Sharp, there is simply no better integrated system for your projects

#1 Furniture Brand is Designed For You

- 25+ years of providing innovative AV furniture and seating solutions
- #1 furniture brand in CE Pro Analysis - for 14 years in a row
- Premium products manufactured in a 100% solar-powered USA factory
- Uniquely quick-shipped with in days
- Backed by unprecedented service and Limited Lifetime Warranty



“We’re excited about our alliance with Sharp. Integrators will benefit from joint training, sales and marketing — and will be able to enjoy quality, turn-key solutions that expertly match Sharp technology.”

-Scott Srolis

VP of Sales and Marketing, Salamander Designs

SALAMANDER PRODUCTS FOR SHARP

The following Salamander products are designed to work with collaboration displays for quick ordering and rapid deployment. Regardless of your specific application, we offer a range of Cabinets for fixed or variable installations, Mobile Stands for projects requiring movement between spaces, and fully adjustable FPS Stands that can convert to a flat, tabletop configuration. Select from our latest styles, materials, sizes and finishes to suit all your interactive display needs.



Salamander products accommodate Sharp's wide size range of collaboration displays, meaning there is a size for every meeting or learning space.



CABINET SOLUTIONS

- Durability and Safety tested. UL Listed Display Mount
- ADA compliant solutions solve "Protrusion and Operable Part reach limits"
- Low Impact Installation - No wall reinforcement, simple toggle bolt installation for anti-tip
- Rapid Global Deployment with standardized/simplified AV solutions that save time and money
- A unique, shallow depth allows for minimal screen providing accessible, comfortable, ergonomic position that improves productivity and user experience
- Full customizable from accessories to look and feel - upgradeable with new style/skin or easy replacement of tops, end-panels and doors as desired.
- Made in America and backed by Limited Lifetime Warranty

CABINETS / LOW PROFILE



**Designed For
Sharp Collaboration
Displays**



**Ergonomic -
minimal screen reach**

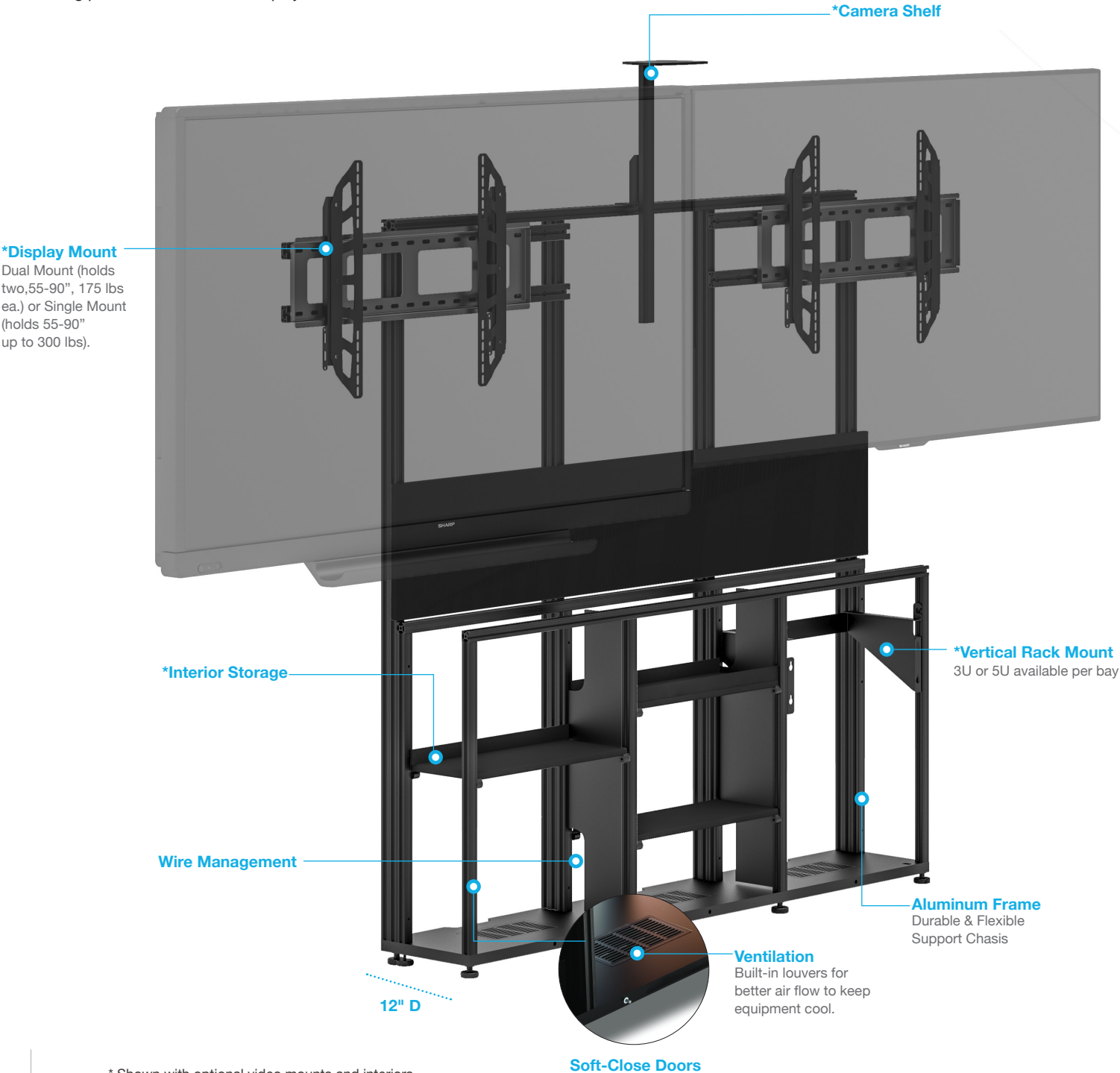


**Wall Mounted -
provides convenience
and frees up floor space**



**ADA
COMPLIANT
SOLUTIONS**

Low-profile, shallow depth cabinets are sleek, streamlined solutions for supporting AV/IT technology. Our innovative design conceals all equipment and cables, and simple installation allows them to be affixed to any wall without special preparation. A unique, shallow depth provides a comfortable working position for interactive display users.



* Shown with optional video mounts and interiors.
Salamander + Sharp



D1/367AM2/

6-Bay, Low-Profile Wall Cabinet Dual Display*

- Dual Display Mount for 60-70" Sharp Collaboration Displays
- Single Camera Shelf
- (8) Adjustable Trays
- (1) 3-U Vertical Rack Rail
- 31.25"H (795mm) x 129.75"W (3296mm) x 12"D (305mm)

* Ships as two cabinets to be mated together.



D1/347AM2/

4-Bay, Low-Profile Wall Cabinet Dual Display

- Dual Display Mount for 60-70" Sharp Collaboration Displays
- Single Camera Shelf
- (4) Adjustable Trays
- (1) 3-U Vertical Rack Rail
- 31.25"H (795mm) x 85.5"W (2172mm) x 12"D (305mm)



D1/347AMXL/

4-Bay, Low-Profile Wall Cabinet Single XL Display

- XL Single Display Mount for 70-90" Sharp Collaboration Displays
- (4) Adjustable Trays
- (1) 3-U Vertical Rack Rail
- 31.25"H (795mm) x 85.5"W (2172mm) x 12"D (305mm)



D1/347AM1/

4-Bay, Low-Profile Wall Cabinet Single Display

- Single Display Mount for 50-90" Sharp Collaboration Displays
- Single Camera Shelf
- (4) Adjustable Trays
- (1) 3-U Vertical Rack Rail
- 31.25"H (795mm) x 85.5"W (2172mm) x 12"D (305mm)



D1/337AM1/

3-Bay, Low-Profile Wall Cabinet Single Display

- Single Display Mount for 50-70" Sharp Collaboration Displays
- Single Camera Shelf
- (3) Adjustable Trays
- (1) 3-U Vertical Rack Rail
- 31.25"H (795mm) x 64.75"W (1645mm) x 12"D (305mm)

CABINETS / STANDARD PROFILE



Designed For
Integrated AV/IT



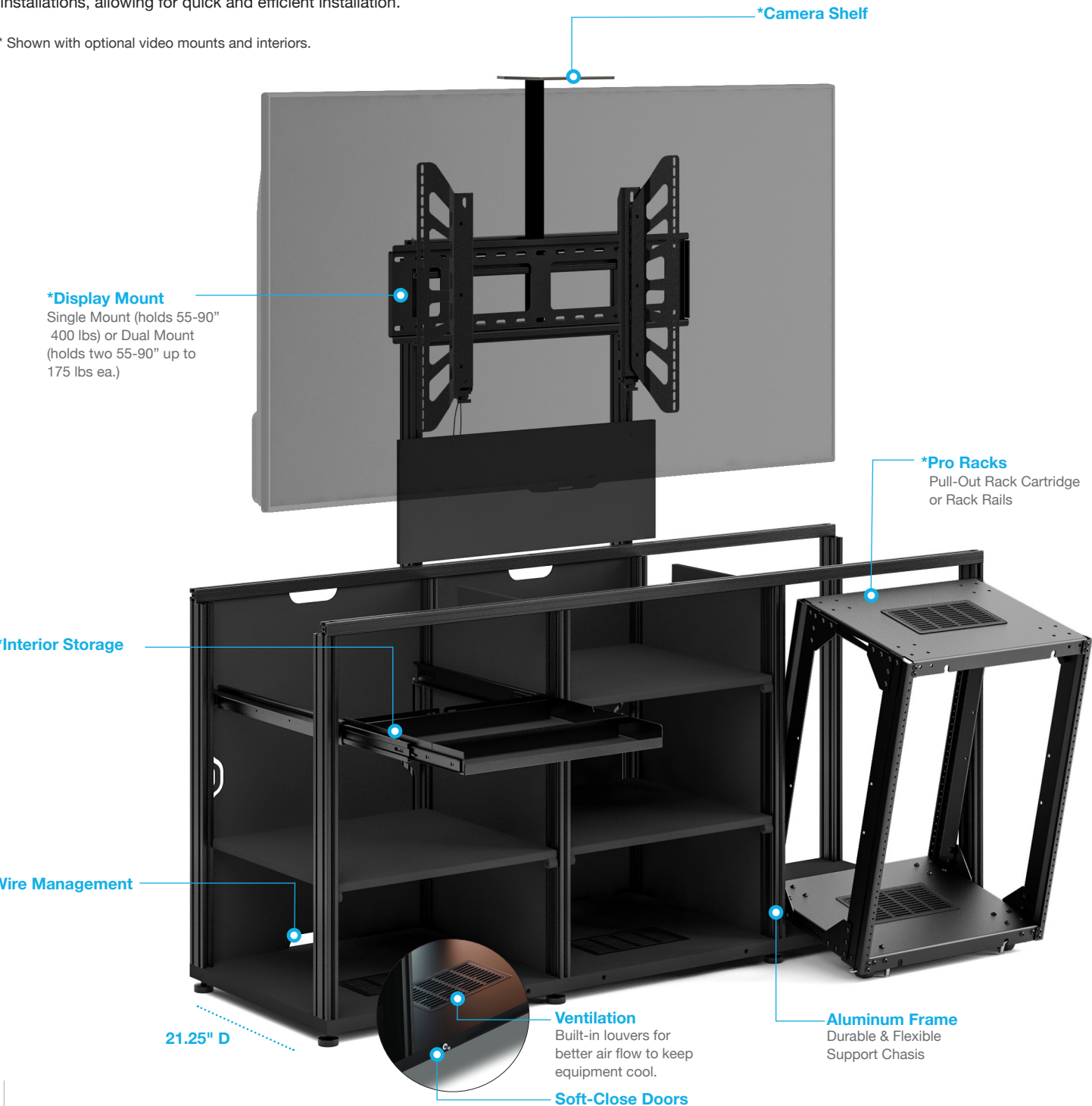
Robust,
Large-Capacity



Low Impact
Installation

Designed for Fully Integrated Technologies. These robust, large-capacity cabinet soystems house all electronics, including integrated support for AV/IT systems. Freestanding and fully integrated cabinets are perfect for retrofit installations, allowing for quick and efficient installation.

* Shown with optional video mounts and interiors.





D2/367BM2/

6-Bay, Standard Profile Cabinet Dual Display*

- Dual Display Mount for 60-90" Sharp Collaboration Displays
- Single Camera Shelf
- (1) Pull-Out Storage Tray
- (7) Adjustable Shelves
- (1) 13-U Pull-Out Rack Cartridge
- (5) Removable Rear Panels
- (1) Active Cooling Rear Panel
- 31.25"H (795mm) x 129.75"W (3296mm)



D2/347BM2/

4-Bay, Standard Profile Cabinet Dual Display

- Dual Display Mount for 60-90" Sharp Collaboration Displays
- Single Camera Shelf
- (1) Pull-Out Storage Tray
- (5) Adjustable Shelves
- (1) 13-U Pull-Out Rack Cartridge
- (3) Removable Rear Panels
- (1) Active Cooling Rear Panel



D2/337BM2/

3-Bay, Standard Profile Cabinet Dual Display

- Dual Display Mount for 60-90" Sharp Collaboration Displays
- Single Camera Shelf
- (3) Pull-Out Storage Tray
- (7) Adjustable Shelves
- (1) 13-U Pull-Out Rack Cartridge
- (2) Removable Rear Panels
- (1) Active Cooling Rear Panel
- 31.25"H (795mm) x 64.75"W (1645mm)



D2/347BM1/

4-Bay, Standard Profile Cabinet Single Display

- Single Display Mount for 50-90" Sharp Collaboration Displays
- Single Camera Shelf
- (1) Pull-Out Storage Tray
- (5) Adjustable Shelves
- (1) 13-U Pull-Out Rack Cartridge
- (3) Removable Rear Panels
- (1) Active Cooling Rear Panel
- 31.25"H (795mm) x 85.5"W (2172mm)



D2/347AMXL/

4-Bay, Standard Profile Cabinet XL Single Display

- Single Display Mount for 60-90" Sharp Collaboration Displays
- Single Camera Shelf
- (1) Pull-Out Storage Tray
- (5) Adjustable Shelves
- (1) 13-U Pull-Out Rack Cartridge
- (3) Removable Rear Panels
- (1) Active Cooling Rear Panel
- 31.25"H (795mm) x 85.5"W (2172mm)



D2/337BM1/

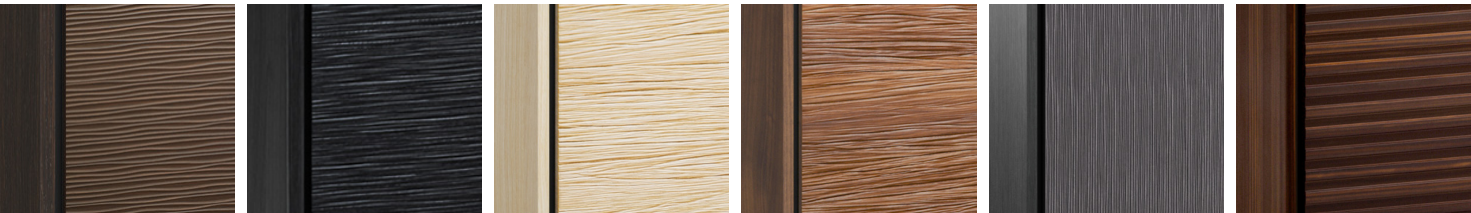
3-Bay, Standard Profile Cabinet Single Display

- Single Display Mount for 60-70" Sharp Collaboration Displays
- Single Camera Shelf
- (1) Pull-Out Storage Tray
- (3) Adjustable Shelves
- (1) 13-U Pull-Out Rack Cartridge
- (2) Removable Rear Panels
- (1) Active Cooling Rear Panel
- 31.25"H (795mm) x 64.75"W (1645mm)

CABINETS / STYLES

!
 *All styles come standard with leveler feet.

We select the finest materials and finishes. Choose from sleek, hand-polished, high-gloss finishes to richly textured real wood fronts or a contemporary beveled edge style with a mix of materials. If you are looking for **something different or special**, please **contact us to discuss custom options**.



BERLIN*
Wenge,
Wave-Texture Doors

CHICAGO*
Black Oak,
Grass-Textured Doors

DENVER – OAK*
Natural Oak,
Bark-Textured Doors

DENVER – WALNUT*
Medium Walnut,
Bark-Textured Doors

SEATTLE*
Gray Oak,
Bark-Textured Doors

ZURICH*
Opium Brown,
Linear Texture Doors



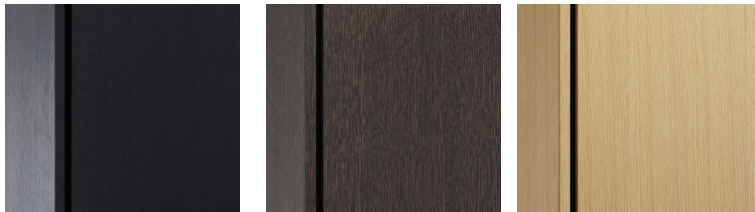
MILAN*
Dimensional, Diamond
Pattern, White

MIAMI*
Gloss Warm White

BARCELONA, WHITE
Natural Walnut, Warm
White Doors,
Beveled-Edge Top

SIENNA*
Medium Walnut,
Flat-Front
Wood Doors

SIENNA*
Gray Walnut,
Flat-Front
Wood Doors



SIENNA*
Black Oak,
Flat-Front
Wood Doors

SIENNA*
Wenge Oak,
Flat-Front
Wood Doors

SIENNA*
Natural Oak,
Flat-Front
Wood Doors

Build Your Own
Fabricate You own skins.
Custom Millwork
Specifications Available

***Custom Finish Matching**
Match your finishes using our
in-house finishing department.

* minimum orders, engineering charges and lead times may apply.



Sharp

PN-L751H

SALAMANDER

FPS2/EL/GG

MOBILE STANDS



TABLE



DISCUSSION



PRESENTATION



TRAVEL

DISPLAY STANDS / ELECTRIC LIFT



Designed For
Sharp™ Collaboration
Displays



Ergonomic
Minimal Screen Reach



ADA
COMPLIANT
SOLUTIONS



UL
LISTED

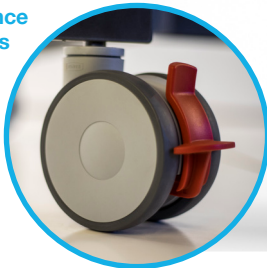
Large Handles and a wide stance provide superior stability and maneuverability



Wire Management allows for clean and uncluttered installation



High Performance Locking Casters provide smooth transport over any surface



Fully Adjustable Motor Control improves user experience and productivity for any size user for any work assignment

* ADA COMPLIANT

Wide base stance allows convenient accessibility

Accessories include a retractable cable reel, storage compartment for rack mounted gear, rear attaching shelf for laptops and keyboards, a storage compartment cover, and even road cases for the Stand and display attached.

Compact, Telescoping Design minimizes storage and transport requirements

ROAD CASE EQUIPMENT FOR EASY DEPLOYMENT



Combine a mobile stand with a road case to provide secure and convenient transport of your display.



DISPLAY STANDS / ELECTRIC LIFT

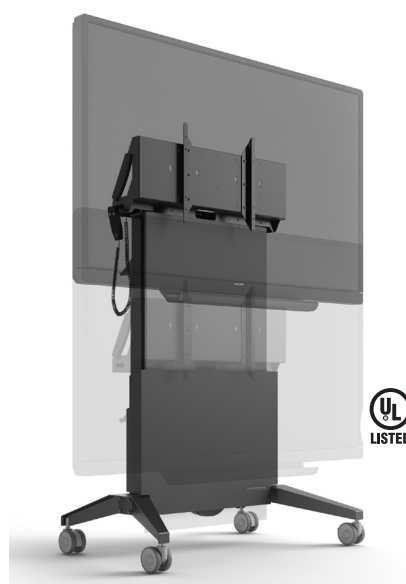


FPS1XL/EL/GG
XL Electric Lift Mobile Stand

Stand for 60-90" Sharp
Collaboration Displays

VESA Compliant:
Horizontal: 400, 600, 800, 1000, 1200mm
Vertical: 400, 500, 600mm

Export Model: FPS1XL/EL/GG/EX



FPS2/EL/GG
Electric Lift Mobile Stand

Stand for 50-90" Sharp
Collaboration Displays

VESA Compliant:
Horizontal: 200, 300, 400, 600mm
Vertical: 200, 300, 400mm

Export Model: FPS2/EL/GG/EX



FPS2/ELT/GG
Electric Lift & Tilt Mobile Stand

Stand for 50-60" Sharp
Collaboration Displays

VESA Compliant:
Horizontal: 200, 250, 300, 350, 400, 450,
500, 550, 600, 650, 700, 750, 800, 850, 900mm
Vertical: 100, 200, 300, 350, 400mm

Export Model: FPS2/ELT/GG/EX

ACCESSORIES

**Electronics Sold Separately*



**Keyboard
Storage Shelf***
FPSA/KS/GT



**Rack Mounting
Equipment Bracket, 5U***
FPSA/VR/3U



**Retractable Power
Cable Reel - USA Only**
FPSA/CR



**Retractable CAT6
Cable Reel**
FPSA/CR/CAT6



**Power Distribution Unit,
9 Outlets - USA Only**
SA/RM/PDU



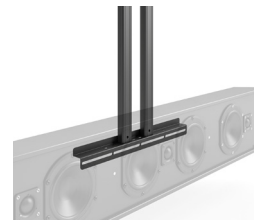
**Secure Equipment
Storage Cover**
FPSA/SC/GT



**Small Shelf with
Mounting Straps***
FPSA/AS1



**Wireless Remote
Control with Memory**
FPSA/RF1



Speaker Bracket*
FPSA/SBK



Camera Shelf*
FPSA/CS

SALAMANDER + SHARP USE CASE

Lift, tilt, motorize and a lot more - in true Italian style! This highly functional, yet gorgeous Electric FPS was beautifully deployed by Project Informatica of Italy with help of TD Maverick Italia.

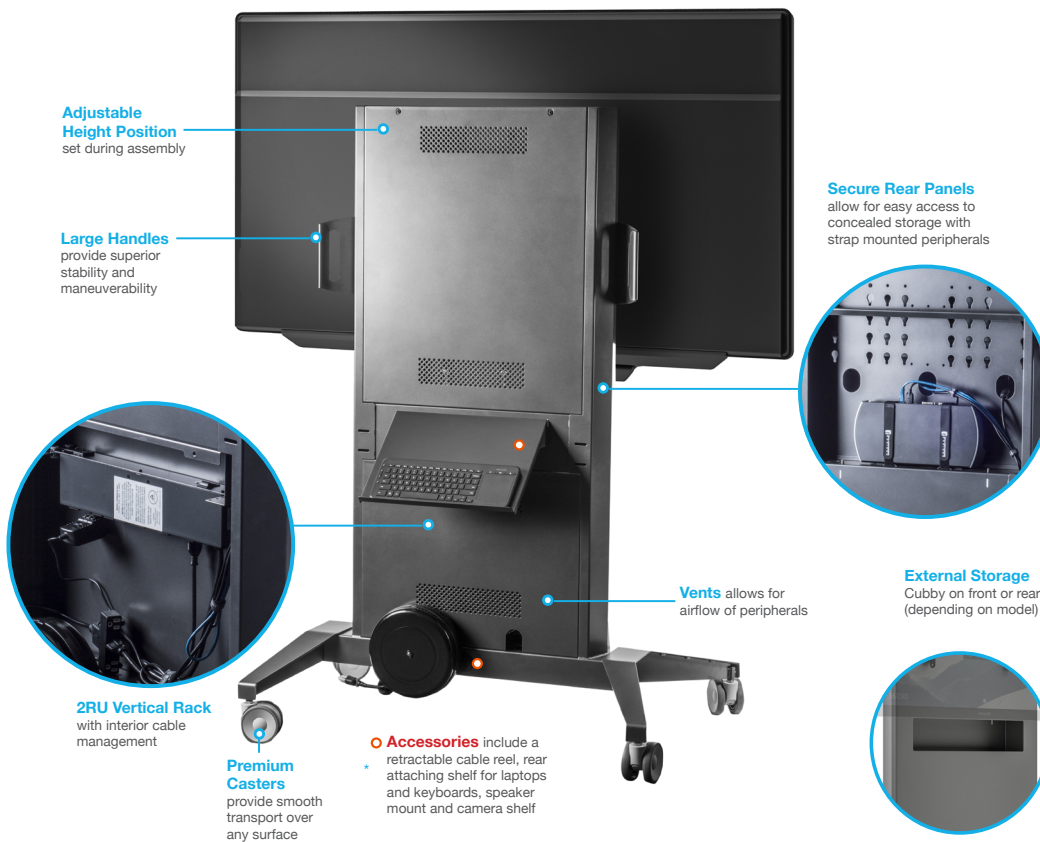


“Salamander Designs’ Electric Lift & Tilt mobile cart is the perfect compliment to Sharp’s Touchscreens. The ergonomics, the ease of use, and the elegant design and finish are greatly appreciated by our best clients.”

-Mario, Project Informatica

DISPLAY STANDS / FIXED HEIGHT

Fixed height, mobile stands were designed to meet your needs, these stands deliver sleek design, functionality and mobility.



FPS1XL/FH/GG XL Fixed Height Mobile Stand

Stand for 60-90" Sharp Collaboration Displays

VESA Compliant:
Horizontal: 400, 600, 800, 1000, 1200mm
Vertical: 400, 500, 600mm

ACCESSORIES

**Electronics Sold Separately*



Keyboard Storage Shelf*
FPSA/KS/GT



Retractable Power Cable Reel - USA Only
FPSA/CR



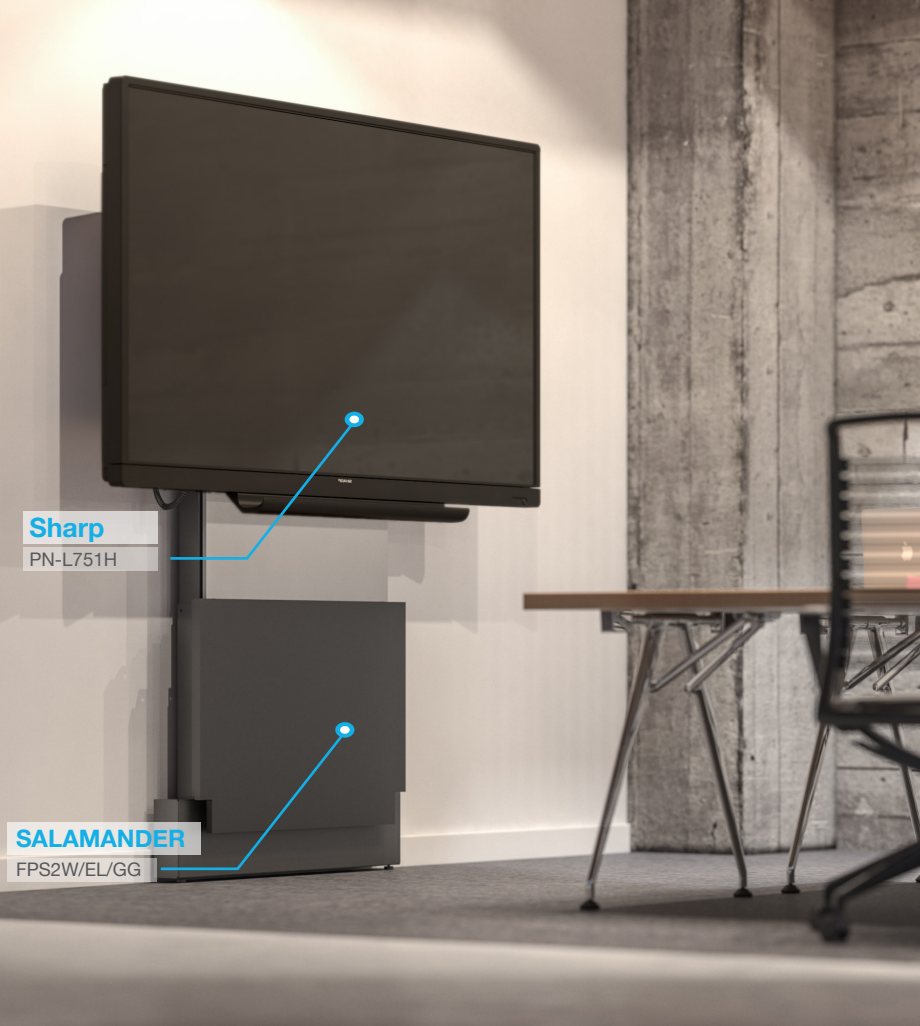
Power Distribution Unit, 9 Outlets - USA Only
SA/RM/PDU



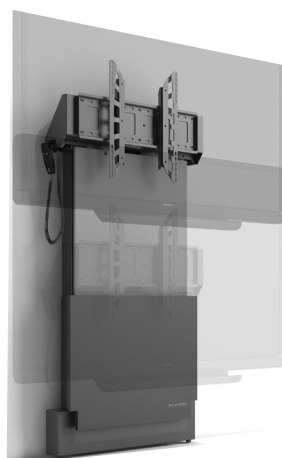
Speaker Bracket*
FPSA/SBK



Camera Shelf*
FPSA/CS



ON-WALL SOLUTIONS



ACCESSORIES



Wireless Remote
Control with Memory
FPSA/RF1

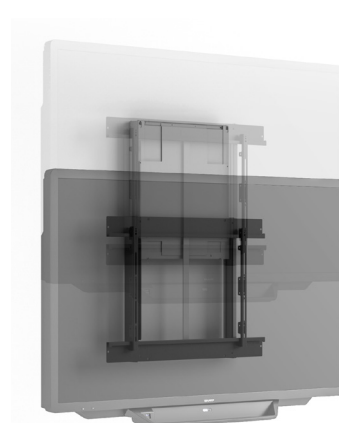
FPS2W/EL/GG **Electric Lift Wall Stand**

Stand for 50-90" Sharp Collaboration Displays

VESA Compliant:
Horizontal 200 - 8000mm
Vertical 200 - 500mm

Range of Travel: Min 34" (836mm) - Max 59.6" (1513mm)

Export Model: FPS2W/EL/GG/EX



EZ1/ML145 **EZ Touch Wall Mount Manual Assist Lift** *Range of Travel 15.75" (400mm)*

Stand for 50-60" Sharp Collaboration Displays

VESA Compliant:
Horizontal 200 - 800mm
Vertical 100 - 440mm

WE ALSO CUSTOMIZE

Salamander also offers Sharp customers/clients virtually unlimited design possibilities and consultation.

For more information on custom options, email sharp@salamanderdesign.com or visit

SalamanderDesigns.com/Commercial/Partners/Sharp/



Virtually unlimited custom design options

Design Your Own

Customizable cabinet
shaped by your needs
in 5 easy steps

Build Your Own

Fabricate your own skins.
*Custom Millwork
Specifications Available*

Branding

Personalize Display Stands with
your logo or full-wrap graphic.

Mix & Match Panels

Swap doors, sides, and tops
from our stock finishes to
create your own look.

*Custom Finish Matching

Match your finishes using our
in-house finishing department.

*Custom Sizes

Compatible Salamander Designs + Sharp AQUOS BOARDS

	4T-B7OCT1U	PN-CE701H	PN-C751H	PN-C861H	PN-L651H	PN-L751H	PN-L851H
CABINETS – LOW PROFILE							
D1/337AM1/	•	•			•		
D1/337AM2/					•		
D1/347AM1/	•	•	•	•	•	•	•
D1/347AM2/	•	•	•	•	•	•	•
D1/347AMXL	•		•	•		•	•
D1/367AM2/	•	•	•	•	•	•	•
CABINETS – STANDARD PROFILE							
D2/337BM1/	•	•			•		
D2/337BM2/	•	•	•	•	•	•	•
D2/347BM1/	•	•	•	•	•	•	•
D2/347BM2/	•	•	•	•	•	•	•
D2/347AMXL/	•	•	•	•		•	•
D2/367BM2/	•	•	•	•	•	•	•
DISPLAY STANDS							
FPS2/EL/GG	•	•			•		
FPS/ELT/GG	•	•	CALL		•		CALL
FPS1XL/EL/GG	•		•	•	•	•	•
FPS1/FH/GG	•	•			•		
FPS1XL/FH/GG	•		•	•	•	•	•
ON WALL SOLUTIONS							
FPS2W/EL/GG		•	•	•	•	•	•
EZ1/ML145		•		•	•		•

Sharp Windows Collaboration Display Bundles



6-Bay, Low-Profile Wall Cabinet Dual Display*

Measures:

31.25"H (793.75mm) x 129.5"W (3289mm)
x 12"D (305mm)

Model: D1/367AM2/CH/OB

Lightly textured, black oak doors with
black glass top and black oak side panels



3-Bay, Low-Profile Wall Cabinet

Measures:

31.25"H (795mm) x 64.75"W
(1645mm) x 12"D (305mm)

Model: D1/337AM1/MM/WH/BK

Warm glass white doors with black
solid surface top

- AV solution retro-fit into existing room
- No wall reinforcement or in-wall cabling needed for display installation saving time and money
- Specialized to support technology, and maximum user engagement
- Streamline specifying, ordering and installing
- ADA-Compliant & handicap friendly
- Includes Adjustable Trays and 3-U Vertical Rack Rail



Electric Lift Mobile Stand

- Compatible with most large Sharp displays up to 175 lbs (79 kg)
- Sleek compact appearance
- Ergonomic design moves easily between work spaces
- Working, collaboration & presentation display orientations
- Optional travel case allow "road trip" portability
- Durability, safety tested & certified

Model: FPS1/EL/GG



Electric Lift Wall Stand

- Compatible with most large Sharp displays up to 175 lbs (79 kg)
- Designed to work natively with and enhance the functionality of displays
- Ergonomic & accessible
- Durable build & compliant design
- Simple, low-impact installation
- ADA Compliant & UL Listed

VESA Compliant: 200-8000mm x 200-500mm

Range of Travel: Min 34" (836mm) -
Max 59.6" (1513mm)

Model: FPS1W/EL/GG



Manual Adjust Mobile Stand

- Compatible with most large Sharp displays up to 175 lbs (79 kg)
- Sleek compact appearance
- Ergonomic design moves easily between work spaces
- Durability, safety tested & certified
- 2RU and shelving built in
- Front cubby storage

VESA Compliant:

Horizontal: 200, 300, 400, 600mm
Vertical: 200, 300, 400mm

Model: FPS1/FH/GG



SALAMANDER + SHARP WORKING FOR YOU

We welcome the opportunity to speak with you about how we can bring together elegant workplace display technology and premium AV furniture for you. For more information, please contact us.



www.salamandercommercial.com/partners/sharp

sharp@salamanderdesigns.com

SHARP

www.sharpusa.com/displays

ProLCD@sharpusa.com