



**SALAMANDER**  
DESIGNS



**Newline**



INTERACTIVE DISPLAY  
SOLUTIONS

PREFERRED PARTNER PROGRAM  
**TEAM SALAMANDER**

# SALAMANDER + NEWLINE PARTNER FOR YOU

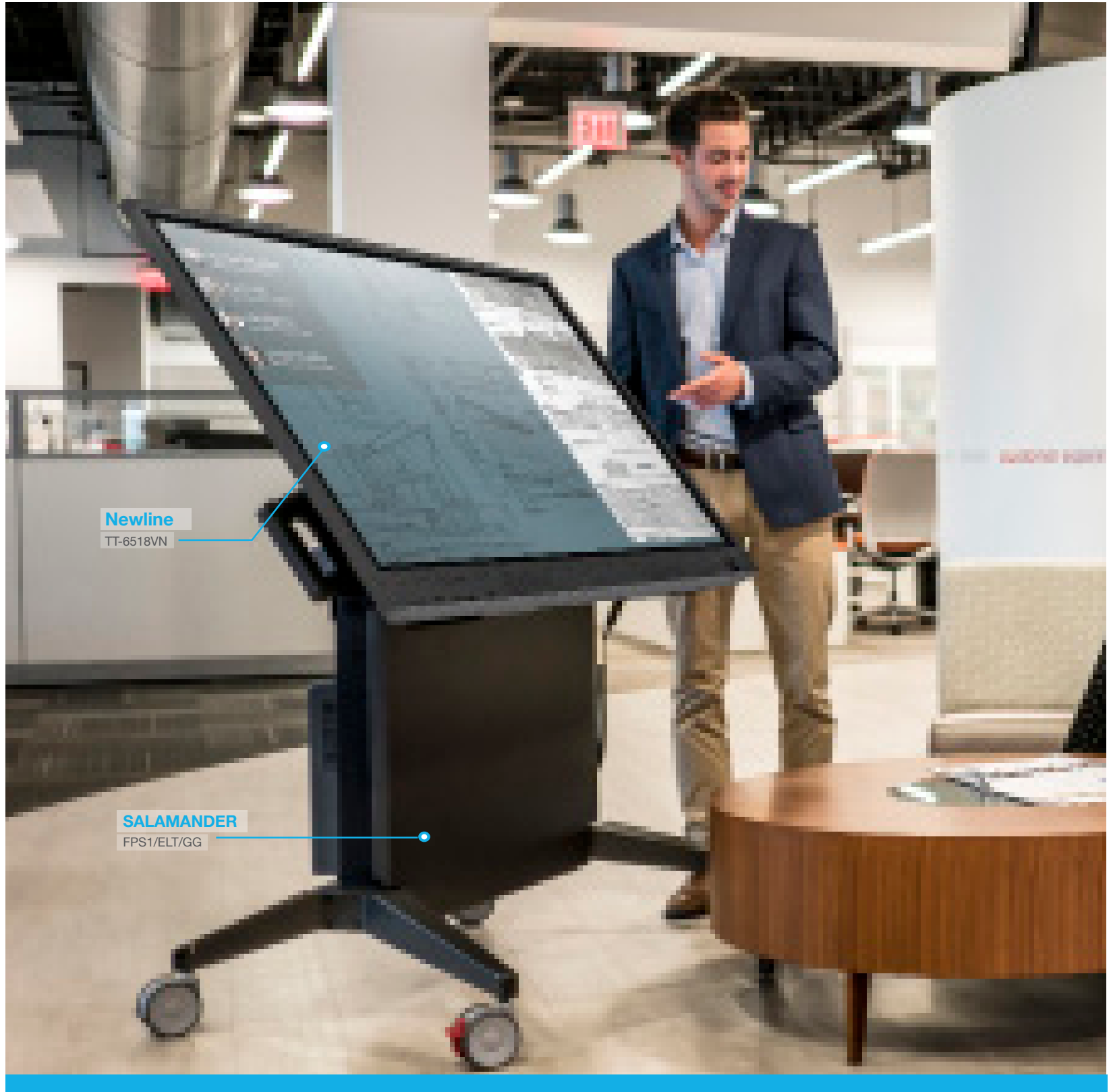
---

Salamander supports Newline to bring together elegant workplace display technology and premium AV furniture for mutual integrators and end customers. These turn-key systems feature innovative low-profile cabinets and mobile carts designed for Newline displays to provide stunning aesthetics and ergonomically-correct display positioning for the best possible user experience.

## Complete Deployment for a Better Experience

- Sleek, Low-Profile Cabinets and Mobile Carts specifically designed for all Newline Displays
- ADA compliant with UL-listed display mount
- Unique depths for greater space optimization
- Accessible, comfortable, ergonomic display positions for improved productivity and user experience
- Low impact installation - no wall reinforcement, simple toggle bolt installation for anti-tip
- Rapid Global Deployment with standardized, simplified AV solutions that save time and money
- Retrofit-friendly and easily upgradeable





**Newline**

TT-6518VN

**SALAMANDER**

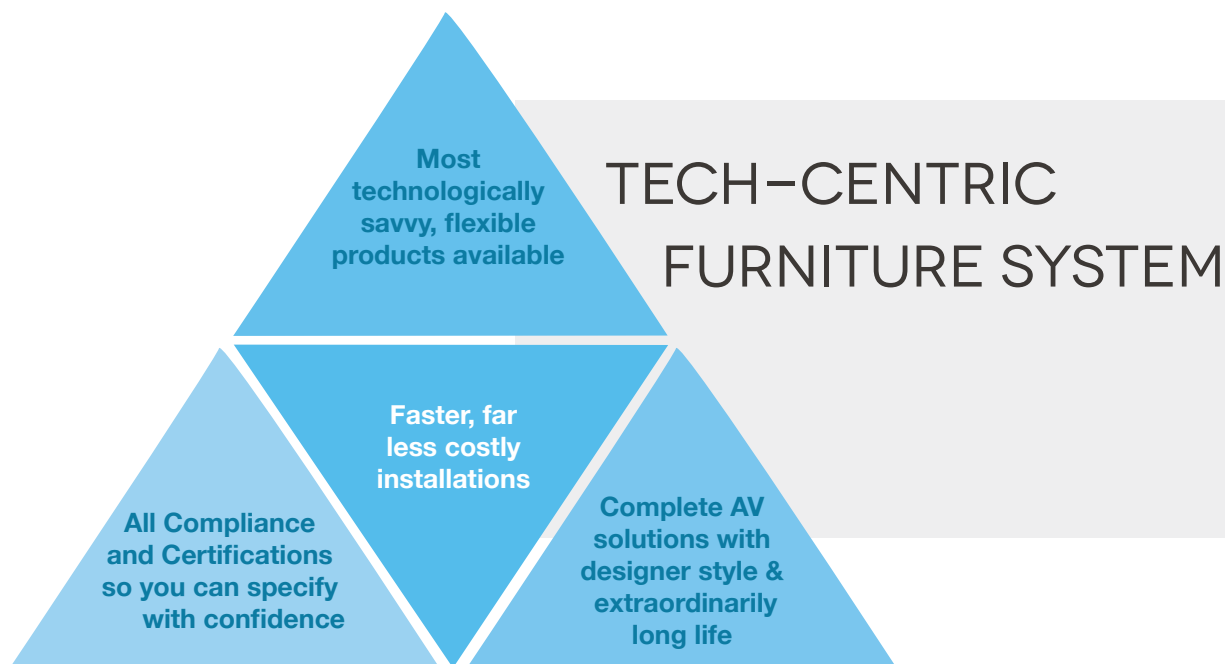
FPS1/ELT/GG

# SALAMANDER + NEWLINE WORKING FOR YOU

The Salamander and Newline difference lies in the seamless intersection of premium furniture design with AV technology that makes your projects faster to specify, easier to install and more visually appealing than ever before. Considered the “go to” furniture brand by integrators the world over, Salamander has a 25-year history of delivering high-quality workplace furniture, seating and AV-support structures. When coupled with Newline, there is simply no better integrated system for your projects

## #1 Furniture Brand is Designed For You

- 25+ years of providing innovative AV furniture and seating solutions
- #1 furniture brand in CE Pro Analysis - for 14 years in a row
- Premium products manufactured in a 100% solar-powered USA factory
- Uniquely quick-shipped within days
- Backed by unprecedented service and Limited Lifetime Warranty



# SALAMANDER PRODUCTS FOR NEWLINE

The following Salamander products are designed to work with Newline interactive displays for quick ordering and rapid deployment. Regardless of your specific application, we offer a range of Cabinets for fixed or variable installations, Mobile Stands for projects requiring movement between spaces, and fully adjustable FPS Stands that can convert to a flat, tabletop configuration. Select from our latest styles, materials, sizes and finishes to suit all your interactive display needs.



Salamander products accommodate the Newline interactive displays from 65" to 86", meaning there is a size for every meeting or learning space.

## TRUTOUCH VN Series

TRUTOUCH VN Series is designed for an intuitive user experience that evokes inspiration. Write seamlessly over your own device's content with a brand-new user interface design which brings you less clutter and more efficiency. With more responsive IR touch technology, 4K Ultra-High Definition resolution, and its non-proprietary nature, TRUTOUCH VN lets you collaborate on content better - without limits.





Newline

TT-6518VN

SALAMANDER

D2/347AM2/

# CABINET SOLUTIONS

- Durability and Safety tested. UL Listed Display Mount
- ADA compliant solutions solve "Protrusion and Operable Part reach limits"
- Low Impact Installation - No wall reinforcement, simple toggle bolt installation for anti-tip
- Rapid Global Deployment with standardized/simplified AV solutions that save time and money
- A unique, shallow depth allows for minimal screen providing accessible, comfortable, ergonomic position that improves productivity and user experience
- Full customizable from accessories to look and feel - upgradeable with new style/skin or easy replacement of tops, end-panels and doors as desired.
- Made in America and backed by Limited Lifetime Warranty

# CABINETS / LOW PROFILE



**Designed For  
Newline Interactive  
Screens**



**Ergonomic -  
minimal screen reach**

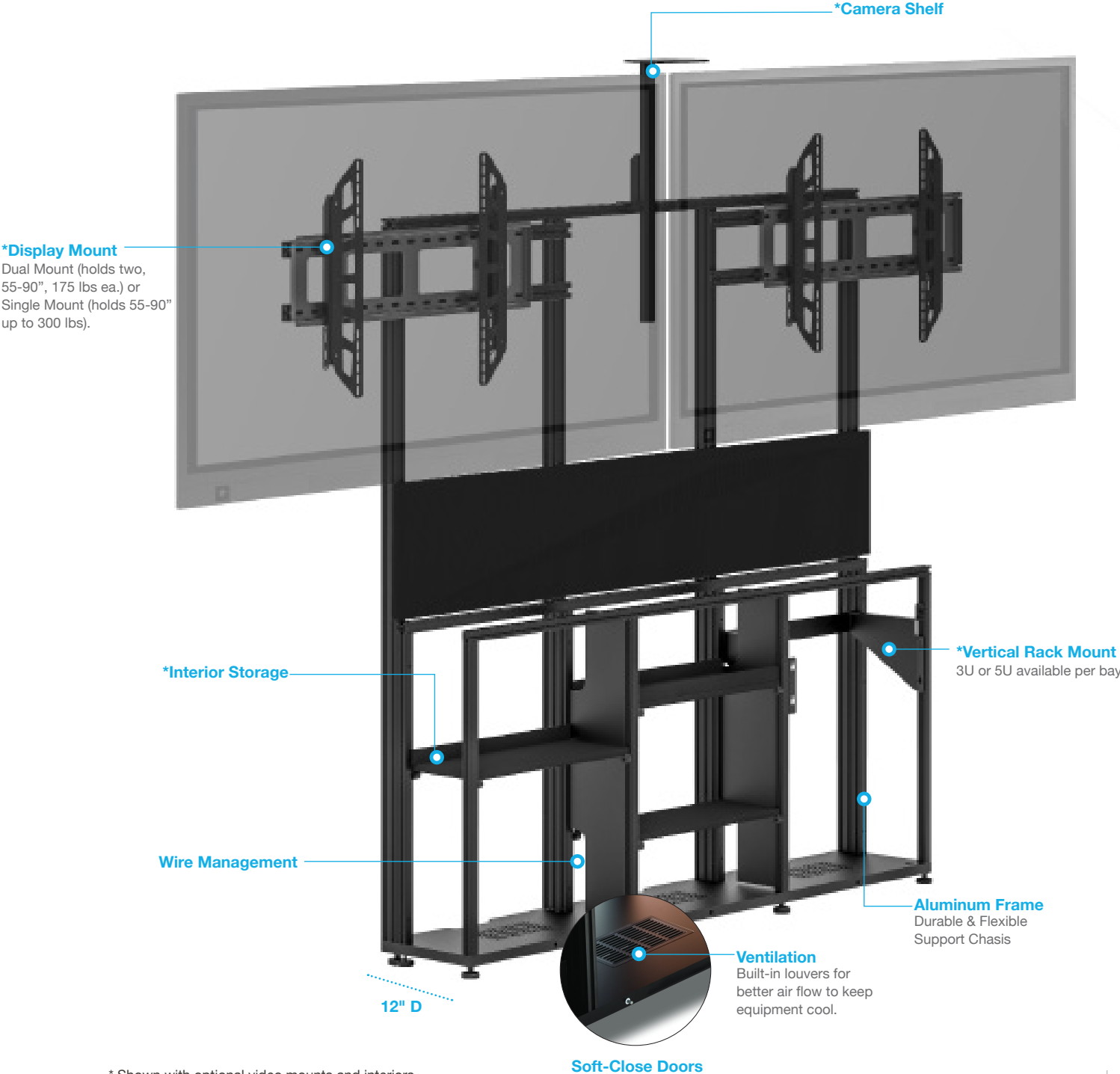


**Wall Mounted -  
provides convenience  
and frees up floor space**



**ADA  
COMPLIANT  
SOLUTIONS**

Low-profile, shallow depth cabinets are sleek, streamlined solutions for supporting AV/IT technology. Our innovative design conceals all equipment and cables, and simple installation allows them to be affixed to any wall without special preparation. A unique, shallow depth provides a comfortable working position for interactive display users.



\* Shown with optional video mounts and interiors.



### D1/367AM2/

#### 6-Bay, Low-Profile Wall Cabinet Dual Display\*

- Dual Display Mount for 65-86" VN Series Newline Interactive Displays
- Single Camera Shelf
- (8) Adjustable Trays
- (1) 3-U Vertical Rack Rail
- 31.25"H (795mm) x 129.75"W (3296mm) x 12"D (305mm)

\* Ships as two cabinets to be mated together.



### D1/347AM2/

#### 4-Bay, Low-Profile Wall Cabinet Dual Display

- Dual Display Mount for 65-86" VN Series Newline Interactive Displays
- Single Camera Shelf
- (4) Adjustable Trays
- (1) 3-U Vertical Rack Rail
- 31.25"H (795mm) x 85.5"W (2172mm) x 12"D (305mm)



### D1/337AL/

#### 3-Bay, Low-Profile Wall Cabinet EZ-Touch Lift Display

- EZ-Touch Lift Mount for 65" VN Series Newline Interactive Displays
- (3) Adjustable Trays
- (1) 3-U Vertical Rack Rail
- 31.25"H (795mm) x 64.75"W (1645mm) x 12"D (305mm)



### D1/347AMXL/

#### 4-Bay, Low-Profile Wall Cabinet Single XL Display

- XL Single Display Mount for 65-86" VN Series Newline Interactive Displays
- (4) Adjustable Trays
- (1) 3-U Vertical Rack Rail
- Cisco Sparkboard Adapter Available
- 31.25"H (795mm) x 85.5"W (2172mm) x 12"D (305mm)



### D1/347AM1/

#### 4-Bay, Low-Profile Wall Cabinet Single Display

- Single Display Mount for 65-86" VN Series Newline Interactive Displays
- Single Camera Shelf
- (4) Adjustable Trays
- (1) 3-U Vertical Rack Rail
- 31.25"H (795mm) x 85.5"W (2172mm) x 12"D (305mm)



### D1/337AM1/

#### 3-Bay, Low-Profile Wall Cabinet Single Display

- Single Display Mount for 65"-75" VN Series Newline Interactive Displays
- Single Camera Shelf
- (3) Adjustable Trays
- (1) 3-U Vertical Rack Rail
- 31.25"H (795mm) x 64.75"W (1645mm) x 12"D (305mm)



# CABINETS / STYLES



\*All styles come standard with leveler feet.

We select the finest materials and finishes. Choose from sleek, hand-polished, high-gloss finishes to richly textured real wood fronts or a contemporary beveled edge style with a mix of materials. If you are looking for **something different or special**, please contact us to discuss custom options.



## MILAN\*

Dimensional, Diamond Pattern,  
Solid Surface, Warm White Top



## MIAMI\*

Gloss Warm,  
Solid Surface, Warm White Top



## ZURICH\*

Opium Brown,  
Solid Surface, Matte Black Top



## CHICAGO\*

Black Oak, Grass-Textured Doors  
Solid Surface, Matte Black Top



## BERLIN\*

Wenge, Wave-Texture Doors  
Solid Surface, Matte Black Top



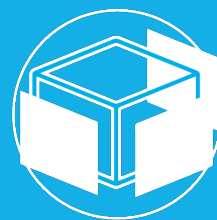
## DENVER - OAK\*

Natural Oak, Bark-Textured Doors  
Solid Surface, Matte Black Top



## DENVER - WALNUT\*

Medium Walnut, Bark-Textured Doors  
Solid Surface, Matte Black Top



## Build Your Own

Fabricate Your own skins.  
Custom Millwork  
Specifications Available

## \*Custom Finish Matching

Match your finishes using our  
in-house finishing department.

\* minimum orders, engineering charges and lead times may apply.



MOBILE  
STANDS



TABLE



DISCUSSION



PRESENTATION



TRAVEL

# DISPLAY STANDS / ELECTRIC LIFT



**Designed For Touchscreens**



**Ergonomic Minimal Screen Reach**



**ADA COMPLIANT SOLUTIONS**



**LISTED**

**Large Handles** and a wide stance provide superior stability and maneuverability



**Fully Adjustable Motor Control** improves user experience and productivity for any size user for any work assignment



**Wire Management** allows for clean and uncluttered installation



**High Performance Locking Casters** provide smooth transport over any surface

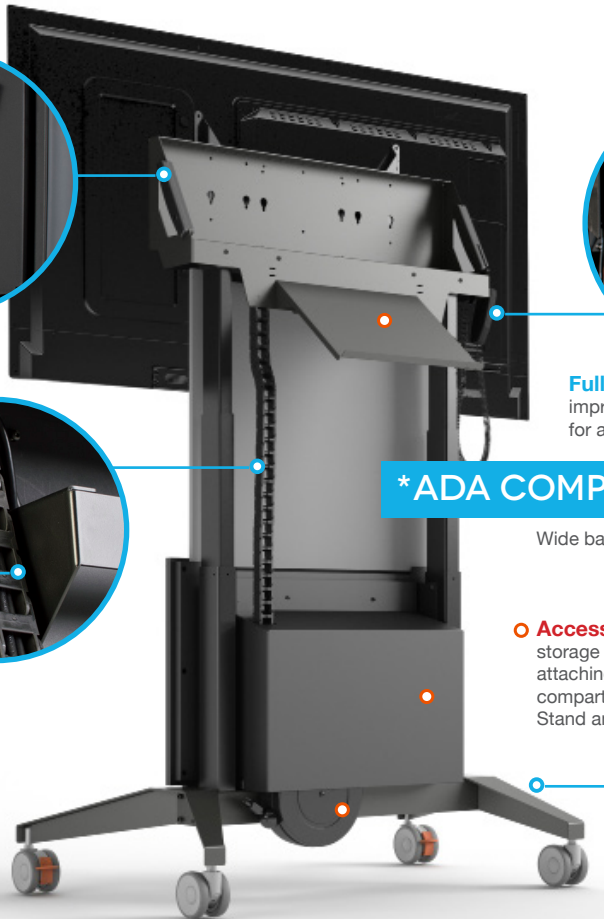


## \*ADA COMPLIANT

Wide base stance allows convenient accessibility

**Accessories** include a retractable cable reel, storage compartment for rack mounted gear, rear attaching shelf for laptops and keyboards, a storage compartment cover, and even road cases for the Stand and display attached.

**Compact, Telescoping Design** minimizes storage and transport requirements



## ROAD CASE EQUIPMENT

FOR EASY DEPLOYMENT



Combine a mobile stand with a road case to provide secure and convenient transport of your display.

\* Accommodates Stand & Mounted Display



Salamander + Newline

# DISPLAY STANDS / ELECTRIC LIFT



## FPS1XL/EL/GG XL Electric Lift Mobile Stand

Stand for 65"-86" VN Series Newline  
Interactive Displays

**VESA Compliant:**  
Horizontal: 400, 600, 800, 1000, 1200mm  
Vertical: 400, 500, 600mm

Export Model: FPS1XL/EL/GG/EX



## FPS1/EL/GG Electric Lift Mobile Stand

Stand for 65" VN Series Newline  
Interactive Displays

**VESA Compliant:**  
Horizontal: 200, 300, 400, 600mm  
Vertical: 200, 300, 400mm

Export Model: FPS1/EL/GG/EX



## FPS1/ELT/GG Electric Lift & Tilt Mobile Stand

Stand for 65" VN Series Newline  
Interactive Displays

**VESA Compliant:**  
Horizontal: 200, 300, 400, 600mm  
Vertical: 200, 300, 400mm

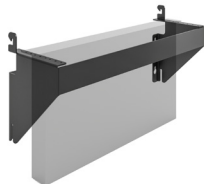
Export Model: FPS1/ELT/GG/EX

## ACCESSORIES

*\*Electronics Sold Separately*



Keyboard  
Storage Shelf\*  
[FPSA/KS/GT](#)



Rack Mounting  
Equipment Bracket, 3RU\*  
[FPSA/VR/3U](#)



Retractable Power  
Cable Reel - USA Only  
[FPSA/CR](#)



Retractable CAT6  
Cable Reel  
[FPSA/CR/CAT6](#)



Power Distribution Unit,  
9 Outlets - USA Only  
[SA/RM/PDU](#)



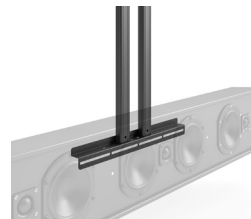
Secure Equipment  
Storage Cover  
[FPSA/SC/GT](#)



Small Shelf with  
Mounting Straps\*  
[FPSA/AS1](#)



Wireless Remote  
Control with Memory  
[FPSA/RF1](#)



Speaker Bracket\*  
[FPSA/SBK](#)



Camera Shelf\*  
[FPSA/CS](#)



# DISPLAY STANDS / FIXED HEIGHT



**Designed For  
Touchscreens**



**Ergonomic  
Minimal Screen Reach**



**ADA  
COMPLIANT  
SOLUTIONS**

**Adjustable  
Height Position**  
set during assembly

**Large Handles**  
provide superior  
stability and  
maneuverability

**Secure Rear Panels**  
allow for easy access to  
concealed storage with  
strap mounted peripherals



**Vents** allows for  
airflow of peripherals

**External Storage**  
Cubby on front or rear  
(depending on model)



**2RU Vertical Rack**  
with interior cable  
management

**Premium  
Casters**  
provide smooth  
transport over  
any surface

**Accessories** include a  
retractable cable reel, rear  
attaching shelf for laptops  
and keyboards, speaker  
mount and camera shelf



# DISPLAY STANDS / FIXED HEIGHT

Fixed height, mobile stands were designed to meet your needs, these stands deliver sleek design, functionality and mobility.



**FPS1XL/FH/GG**  
**XL Fixed Height Mobile Stand**

Stand for 65"-86" VN Series Newline  
Interactive Displays

**VESA Compliant:**  
Horizontal: 400, 600, 800, 1000, 1200mm  
Vertical: 400, 500, 600mm



**FPS1/FH/GG**  
**Fixed Height Mobile Stand**

Stand for 65" VN Series Newline  
Interactive Displays

**VESA Compliant:**  
Horizontal: 200, 300, 400, 600mm  
Vertical: 200, 300, 400mm

## ACCESSORIES



**Keyboard Storage Shelf\***  
**FPSA/KS/GT**



**Retractable Power  
Cable Reel - USA Only**  
**FPSA/CR**



**Power Distribution Unit,  
9 Outlets - USA Only**  
**SA/RM/PDU**



**Speaker Bracket\***  
**FPSA/SBK**



**Camera Shelf\***  
**FPSA/CS**

*\*Electronics Sold Separately*

# ON-WALL SOLUTIONS

**Newline**

TT-7518VN

**SALAMANDER**

FPS1W/EL/GG

# WALL STAND / ELECTRIC LIFT



## FPS1W/EL/GG Electric Lift Wall Stand

Stand for 65-86" VN Series Newline Interactive Displays

**VESA Compliant:**  
Horizontal 200 - 8000mm  
Vertical 200 - 500mm



**Range of Travel:** Min 34" (836mm) - Max 59.6" (1513mm)

**Export Model:** FPS1W/EL/GG/EX

### ACCESSORIES



Camera Shelf  
FPSA/CS



Wireless Remote  
Control with Memory  
FPSA/RF1

# WALL MOUNT / MANUAL ASSIST LIFT



## EZ1/ML145 EZ Touch Wall Mount Manual Assist Lift *Range of Travel 15.75" (400mm)*

Stand for 65-86" VN Series Newline Interactive Displays

**VESA Compliant:**  
Horizontal 200 - 800mm  
Vertical 100 - 440mm



## Compatible Salamander Designs + Newline Interactive Monitors

	TT-6518VN	TT-7518VN	TT-8618VN
CABINETS – LOW PROFILE			
3 bay, EZ-Touch Lift D1/337AL/	•		
3-bay, Single Monitor D1/337AM1/	•	•	
4-bay, Single Monitor D1/347AM1/	•	•	•
4-bay, Dual Monitor D1/347AM2/	•	•	•
4-bay, XL Monitor, D1/347AMXL	•	•	•
6-bay, Dual Monitor, D1/367AM2/	•	•	•
DISPLAY STANDS			
Electric Lift Mobile Stand, FPS1/EL/GG	•		
Electric XL Lift Mobile Stand, FPS1XL/EL/GG	•	•	•
Electric Lift & Tilt Mobile Stand, FPS1L/ELT/GG	•		
Fixed Height Mobile Stand, FPS1/FH/GG	•		
Fixed Height XL Mobile Stand, FPS1XL/FH/GG	•	•	•
ON WALL SOLUTIONS			
Electric Lift Wall Stand, FPS1W/EL/GG	•	•	•
EZ Touch Wall Mount, EZ1/ML145	•	•	•

# WE ALSO CUSTOMIZE

Salamander also offers Newline customers/clients virtually unlimited design possibilities and consultation.

For more information on custom options, email [custom@salamanderdesign.com](mailto:custom@salamanderdesign.com) or visit

[SalamanderDesigns.com/Commercial](http://SalamanderDesigns.com/Commercial)



## Virtually unlimited custom design options

### Design Your Own

Customizable cabinet  
shaped by your needs in  
5 easy steps

### Build Your Own

Fabricate your own skins.  
*Custom Millwork  
Specifications Available*

### Branding

Personalize Display Stands with  
your logo or full-wrap graphic.

### Mix & Match Panels

Swap doors, sides, and tops  
from our stock finishes to  
create your own look.

### \*Custom Finish Matching

Match your finishes using our  
in-house finishing department.

### \*Custom Sizes

\*Minimum orders, engineering charges and lead times may apply.

# SALAMANDER + NEWLINE WORKING FOR YOU

We welcome the opportunity to speak with you about how we can bring together elegant workplace display technology and premium AV furniture for you. For more information, please contact us.



**SALAMANDER DESIGNS**

**[salamanderdesigns.com/commercial/partners/Newline](https://salamanderdesigns.com/commercial/partners/Newline)**

**[NewLine@salamanderdesigns.com](mailto:NewLine@salamanderdesigns.com)**



**[newline-interactive.com](https://newline-interactive.com)**

**[sales@newline-interactive.com](mailto:sales@newline-interactive.com)**

