



**SALAMANDER**  
DESIGNS

**COLLABORATION FURNITURE**

**BUNDLE SOLUTIONS**



## 4 BAY, SINGLE MONITOR CREDENZA

**D2/347BM1/**

This robust, large-capacity cabinet system houses all electronics, including integrated support for AV and IT systems. Freestanding and fully-integrated, this credenza is perfect for retrofit installations, allowing for quick and efficient installation without involving additional tradespeople to install electrical wiring or reinforce walls.

**Available in a variety of styles.**



**DYO**  
DESIGN YOUR OWN

See our **full-line catalog** for more customizable credenzas or visit  
[SalamanderDesigns.com/Commercial](http://SalamanderDesigns.com/Commercial)



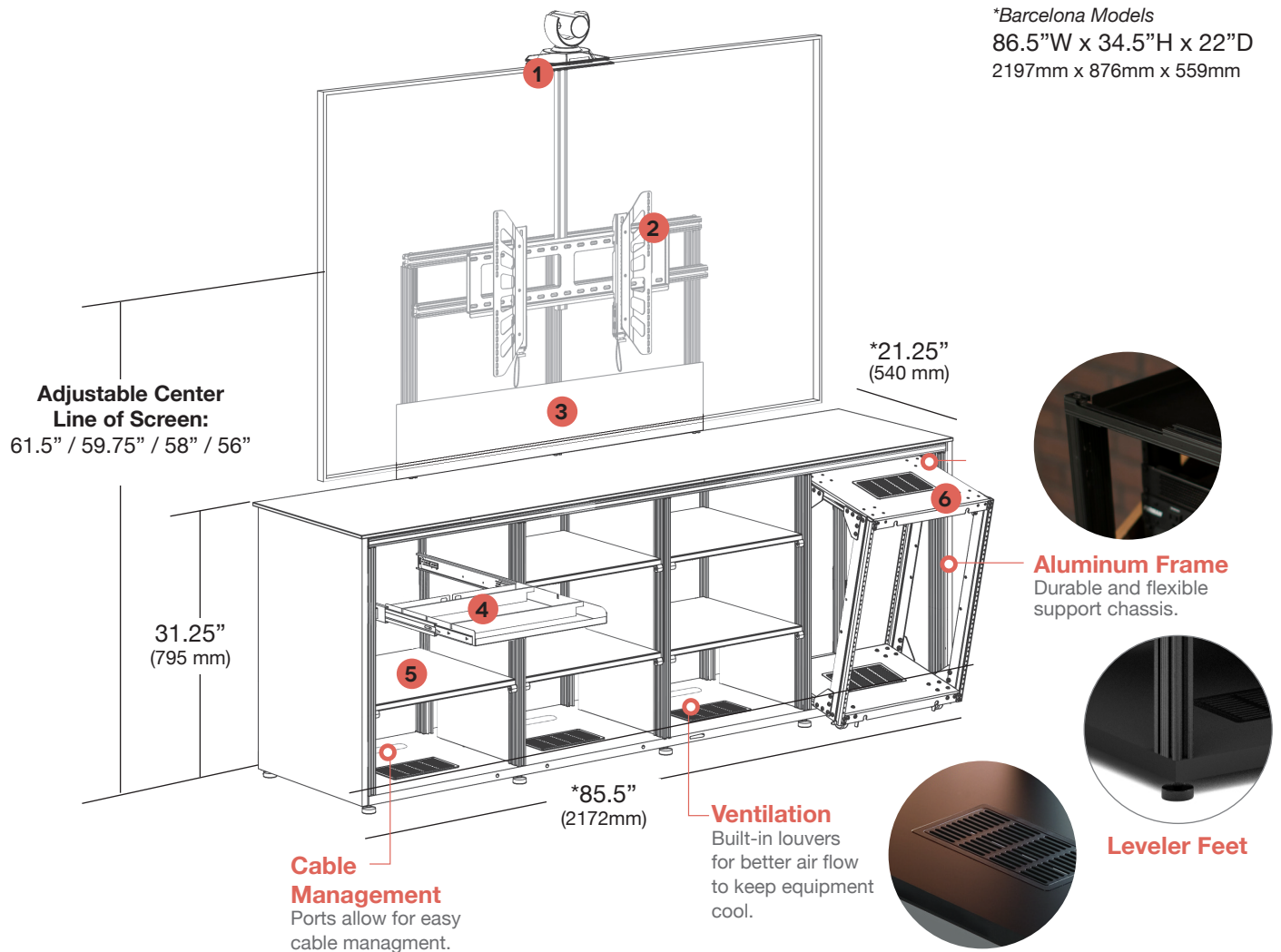


# 4 BAY, SINGLE MONITOR CREDENZA

COLLABORATION FURNITURE

D2/347BM1/

BUNDLE SOLUTIONS

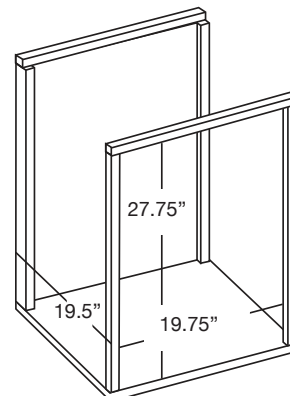


## \*CREDENZA INCLUDES:

1. (1) Camera Shelf
2. (1) Single Monitor Mount
3. (1) Black, Modesty Panel
4. (1) Pull-Out Storage Tray
5. (5) Adjustable Shelves
6. (1) 13-U Pull-Out Rack Cartridge
7. (1) Active Cooling Rear Panel
8. (3) Pinch-Out Rear Panels

## Typical interior bay dimensions:

19.75"W (502 mm) x 27.75"H (705 mm)  
x 19.5"D (495 mm)





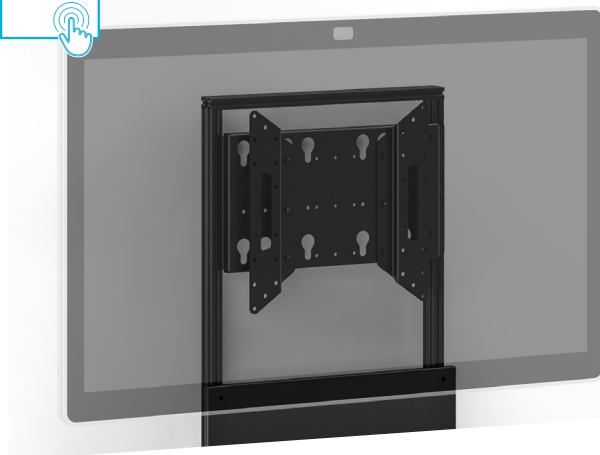
## VIDEO INTEGRATION

### Single Monitor Mount

- Holds 50-103", 175 lbs (80kg)
- Integrated mount with 11.75"H (298mm) black modesty panel
- Vesa Compliant: Horizontal 200 - 800 mm, Vertical 200 - 500 mm
- Adjustable mounting surface spaced at 5" min (127mm) distance from the wall. The width is adjustable to accommodate the screens listed. Overall height is 70" (1778mm) with wings and 65" (1651mm) to the top of the mount as shipped. all dimensions are subject to change based on style and feet.
- Adjustable Center Line of Screen:  
61.5" (1562mm) / 59.75" (1518mm) /  
58" (1473mm) / 56" (1422mm)

\* 84" Microsoft Surface Hub adapter available to increase capacity. (#CA/MA1)

55-103"



### Camera Shelf

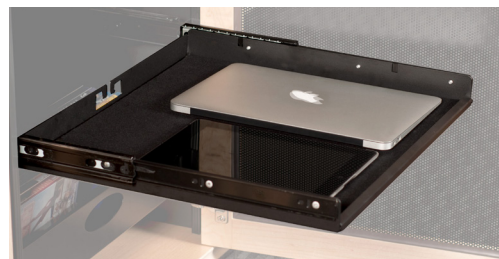
- Shelf integrates camera above, below or between displays on this model.
- Fully adjustable height.
- Single Shelf: 10"W (254mm) x 6"D (152mm) x .25"Th (6mm)
- Dual Shelf: 10"W (254mm) x 6"D (152mm) x .5"Th (13mm)
- Maximum Weight Capacity of 5 lbs (2 kgs)

Dual Camera Shelf Available  
CA/CM/D

## INTERIOR STORAGE

### Pull-Out Storage Tray

- Storage tray with adjustable dividers (2), felt liner and integrated wire manager
- Utilizes heavy duty ball bearing slides, black steel body.
- Maximum Weight Capacity: 50 lbs (22.6 kgs)
- Measures: 17.25"W (438mm) x 16"D (406mm) x 1.625"H (42mm)



### Adjustable Shelves (7 included)

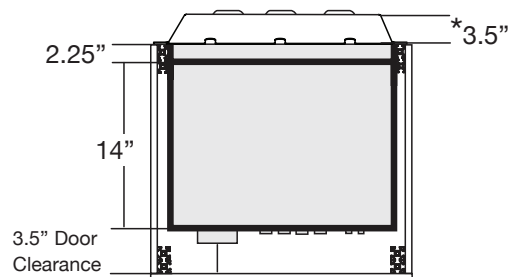
- Fully adjustable
- Matte black, powder-coated MDF
- Maximum Weight Capacity: 75 lbs (34 kgs)
- Measures: 19.75"W (502mm) x 17.5"D (445mm) x .625" TH (16mm)





## 13-U PULL-OUT RACK CARTRIDGE

- 13 rack unit storage
- Pull-out 19" standard rack with rails front and back of the rack
- Cabinet guide rails and in-line caster base provide simple use and transport
- Weight capacity of 200 lbs (90.7 kgs)
- Heavy duty bearing wheels for easy installation, removal, and maneuvering of full equipment racks during service
- Rugged 12-gauge powder coated steel construction
- Flexible wire management wire loom allows for removal of rack from cabinet with 360 degrees of access to components without disconnecting from cabinet. An absolute step up from slide out and rotational racks service constraints
- Tool-less removal / installation for service
- Does not require cabinet to be attached to the wall or floor as other solutions.



\* When using optional Extended Rear Panel (sold separately).

### Options Include:

- **Fan Kit** (# FI/CR/AC) active cooling insert that provides front exhausting of heat to protect components.
- **Wire Lacing Bars** (RM/LB2)
- **14"D Vented Rack Shelves** (RM/VS2U, RM/VS3U, RM/VS4U)
- **Face Plates** (RM/VFP/1U, RM/VFP/2U, RM/VFP/3U, RM/VFP/4U, )



## COOLING & ACCESS

### Active Cooling Rear Panel

- Thermostatically controlled cooling system turns On at approx 80° F, maximum speed is reached at 95° F
- Automatic, low-noise cooling system with 22 dBA, quad 80 mm exhaust fans
- Air Flow: 26 CFM
- Exhaust Direction: Rearward
- Power Consumption: 1W in standby mode; 4 W in mid speed 8-10 W in full speed
- Thermistor: Remote with 20" lead
- Input: 100-240V / 50Hz-60Hz. International power plug available (#400-230 and 400-235)



### Pinch-Out Rear Panels (3 included)

- Permit fast, easy access to components and wiring







# 4 BAY, SINGLE MONITOR CREDENZA

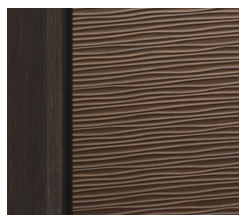
COLLABORATION FURNITURE

D2/347BM1/

BUNDLE SOLUTIONS

## STYLES

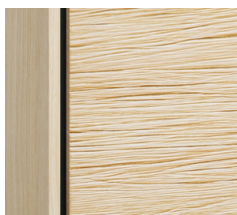
We select the finest materials and finishes. Choose from sleek, hand-polished, high-gloss finishes to richly textured real wood fronts or a contemporary beveled edge style with a mix of materials. **If you are looking for something special please contact us to discuss custom options.**



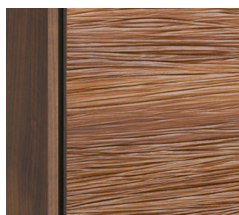
**BERLIN\***  
Wenge,  
Wave-Texture Doors



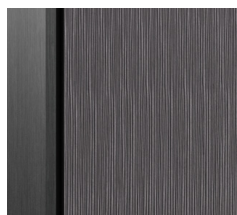
**CHICAGO\***  
Black Oak,  
Grass-Textured Doors



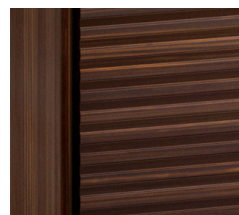
**DENVER - OAK\***  
Natural Oak,  
Bark-Textured Doors



**DENVER - WALNUT\***  
Medium Walnut,  
Bark-Textured Doors



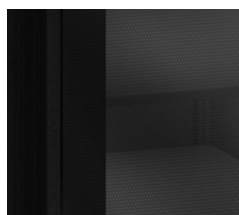
**SEATTLE\***  
Gray Oak,  
Bark-Textured Doors



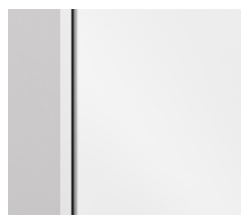
**ZURICH\***  
Opium Brown,  
Linear Texture Doors



**MILAN\***  
Dimensional, Diamond  
Pattern, White



**OSLO\***  
Black Oak Sides,  
Black Glass Doors



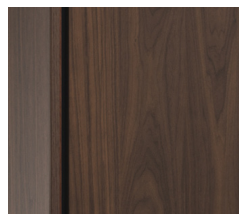
**MIAMI\***  
Gloss Warm White



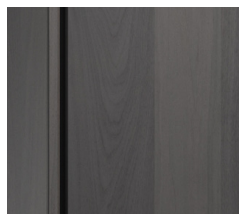
**BARCELONA, WHITE**  
Natural Walnut, Warm  
White Doors,  
Beveled-Edge Top



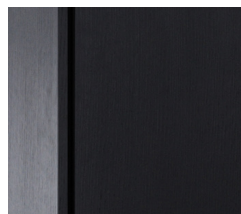
**BARCELONA, BLACK**  
Natural Walnut,  
Black Glass Doors,  
Beveled-Edge Top



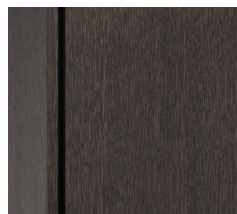
**SIENNA\***  
Medium Walnut,  
Flat-Front  
Wood Doors



**SIENNA\***  
Gray Walnut,  
Flat-Front  
Wood Doors



**SIENNA\***  
Black Oak,  
Flat-Front  
Wood Doors



**SIENNA\***  
Wenge Oak,  
Flat-Front  
Wood Doors



**SIENNA\***  
Natural Oak,  
Flat-Front  
Wood Doors