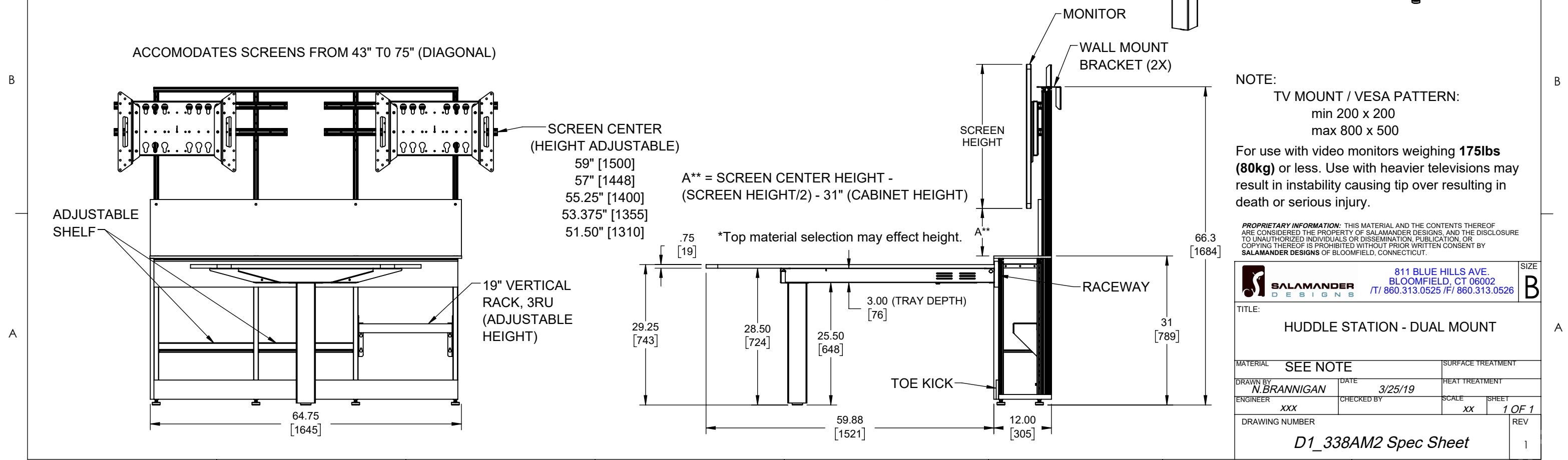
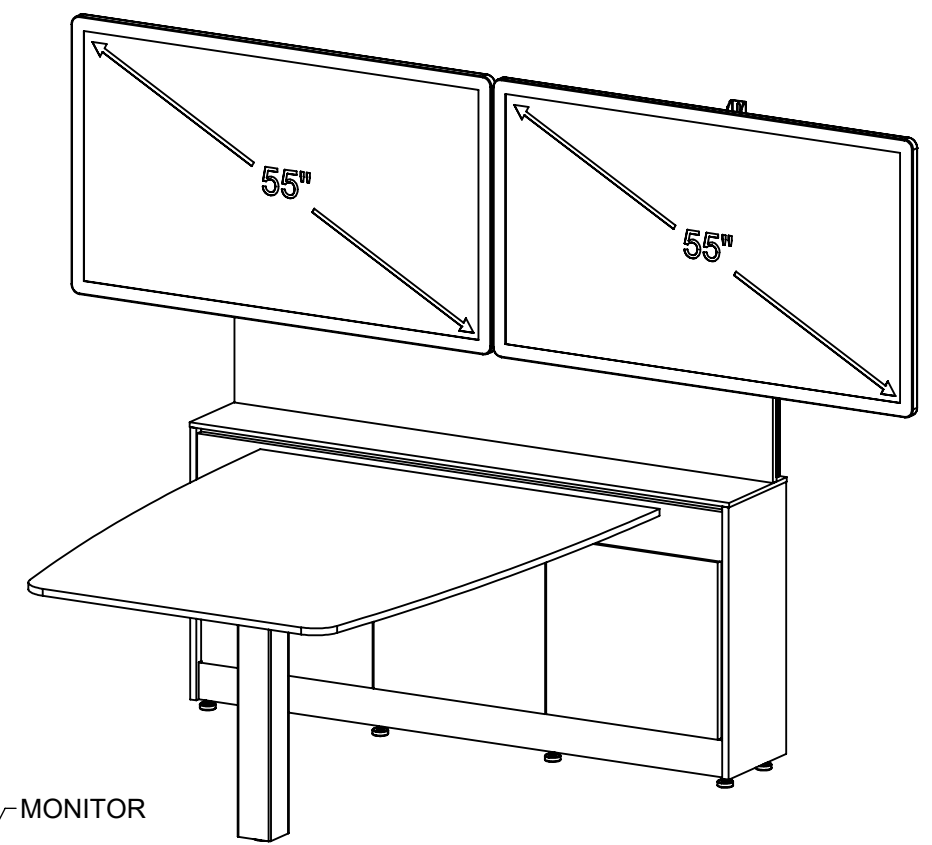
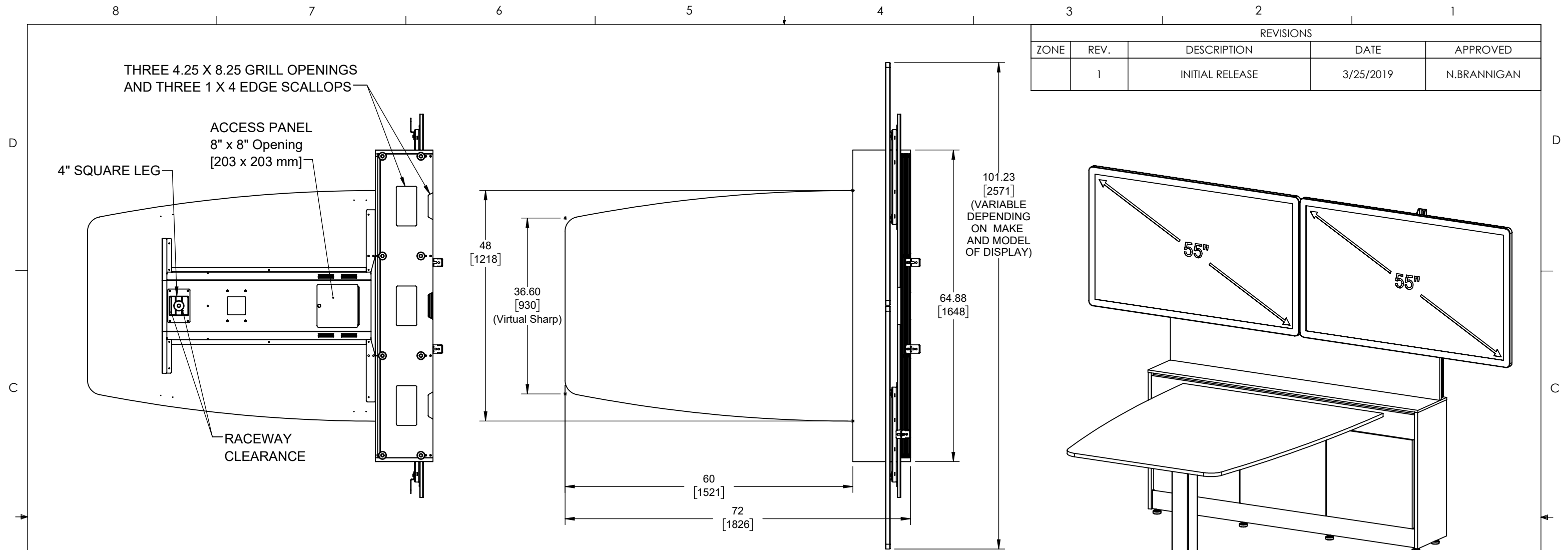


REVISIONS				
ZONE	REV.	DESCRIPTION	DATE	APPROVED
	1	INITIAL RELEASE	3/25/2019	N.BRANNIGAN



NOTE:
 TV MOUNT / VESA PATTERN:
 min 200 x 200
 max 800 x 500

For use with video monitors weighing **175lbs (80kg)** or less. Use with heavier televisions may result in instability causing tip over resulting in death or serious injury.

PROPRIETARY INFORMATION: THIS MATERIAL AND THE CONTENTS THEREOF ARE CONSIDERED THE PROPERTY OF SALAMANDER DESIGNS, AND THE DISCLOSURE TO UNAUTHORIZED INDIVIDUALS OR DISSEMINATION, PUBLICATION, OR COPYING THEREOF IS PROHIBITED WITHOUT PRIOR WRITTEN CONSENT BY SALAMANDER DESIGNS OF BLOOMFIELD, CONNECTICUT.

		811 BLUE HILLS AVE. BLOOMFIELD, CT 06002 T/ 860.313.0525 / F/ 860.313.0526		SIZE B
TITLE: Huddle Station - Dual Mount				
MATERIAL: SEE NOTE		SURFACE TREATMENT:		
DRAWN BY: N.BRANNIGAN	DATE: 3/25/19	HEAT TREATMENT:		SHEET: 1 OF 1
ENGINEER: xxx	CHECKED BY:	SCALE: xx	REV: 1	
DRAWING NUMBER: D1_338AM2 Spec Sheet				REV: 1